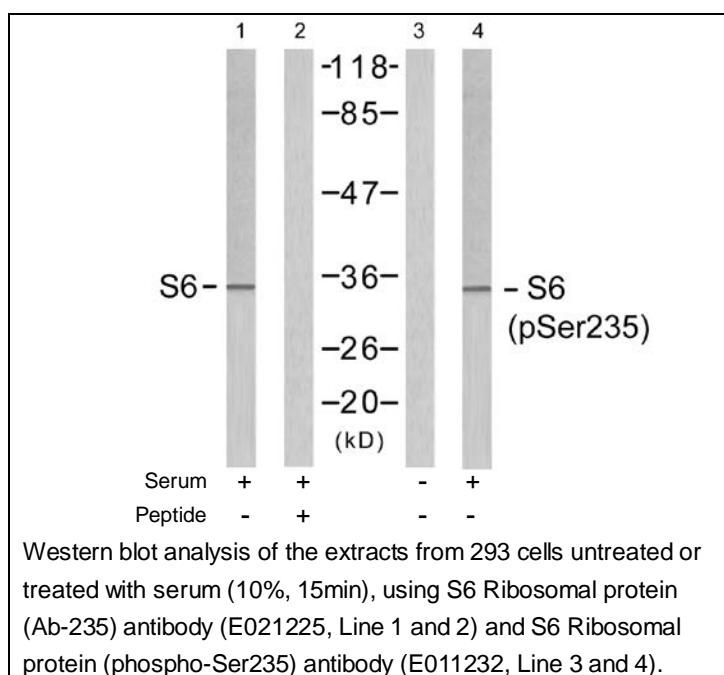




S6 Ribosomal Protein (Phospho-Ser235) Antibody

E011232

- Catalog Number:** E011232-1, E011232-2
- Amount:** 50µg/50µl, 100µg/100µl
- Swiss-Prot No. :** P62753
- All Names:** 40S ribosomal protein S6, Phosphoprotein NP33, RPS6, RS6, ribosomal protein S6
- All Sites:** Human: Ser235; Mouse: Ser235; Rat: Ser235
- Form of Antibody:** Rabbit IgG in phosphate buffered saline (without Mg^{2+} and Ca^{2+}), pH 7.4, 150mM NaCl, 0.02% sodium azide and 50% glycerol.
- Storage/Stability:** Store at -20°C/1 year
- Immunogen:** The antiserum was produced against synthesized phosphopeptide derived from human S6 Ribosomal protein around the phosphorylation site of serine 235 (R-L-S^P-S-L).
- Purification:** The antibody was affinity-purified from rabbit antiserum by affinity-chromatography using epitope-specific phosphopeptide. The antibody against non-phosphopeptide was removed by chromatography using non-phosphopeptide corresponding to the phosphorylation site.
- Specificity/Sensitivity:** S6 Ribosomal protein (phospho-Ser235) antibody detects endogenous levels of S6 Ribosomal protein only when phosphorylated at serine 235.
- Reactivity:** Human, Mouse, Rat
- Applications:** WB: 1:500~1:1000
- References:** McBride K, et al. (1998) Mol Cell Biol 18(9): 5073-5081.
Williams AJ, et al. (2003) Plant Physiol 132(4): 2086-2097.
Wilson MA, et al. (1997) Biochem J 325(Pt 1): 217-222.
Arnesen T, et al. (2005) Biochem J 386(Pt 3): 433-443.



For Research Use Only