



eIF4E (Phospho-Ser209) Antibody

E011233

Catalog Number: E011233-1, E011233-2

Amount: 50µg/50µl, 100µg/100µl

Swiss-Prot No. : P06730

Form of Antibody: Rabbit IgG in phosphate buffered saline (without Mg^{2+} and Ca^{2+}), pH 7.4, 150mM NaCl, 0.02% sodium azide and 50% glycerol.

Storage/Stability: Store at -20°C/1 year

Immunogen: The antiserum was produced against synthesized phosphopeptide derived from human eIF4E around the phosphorylation site of serine 209 (S-G-S^P-T-T).

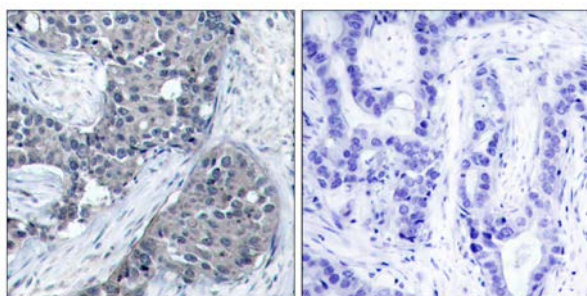
Purification: The antibody was affinity-purified from rabbit antiserum by affinity-chromatography using epitope-specific phosphopeptide. The antibody against non-phosphopeptide was removed by chromatography using non-phosphopeptide corresponding to the phosphorylation site.

Specificity/Sensitivity: eIF4E (phospho-Ser209) antibody detects endogenous levels of eIF4E only when phosphorylated at serine 209.

Reactivity: Human, Mouse, Rat

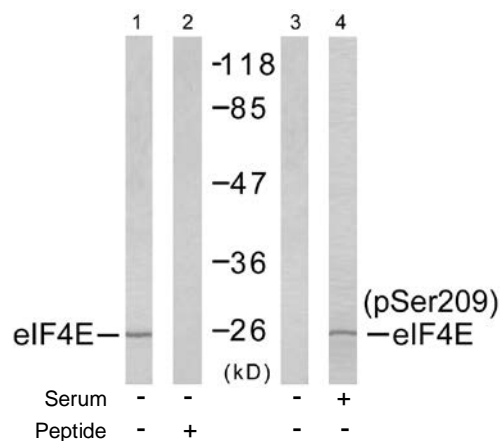
Applications: WB: 1:500~1:1000 IHC: 1:50~1:100

References: Li BD, et al. (1998) *Ann Surg*; 227(5): 756-763
 Altmann M, et al. (1989) *Nucleic Acids Res*; 17(18): 7520
 De Gregorio E, et al. (2001) *RNA*; 7(1): 106-113
 Gu W, et al. (2004) *Nucleic Acids Res*; 32(15): 4448-4461



P-Peptide - +

Immunohistochemical analysis of paraffin-embedded human breast carcinoma tissue, using eIF4E (phospho-Ser209) antibody (E011233).



Western blot analysis of extract from NIH/3T3 cells untreated or treated with 10% serum (15min), using eIF4E (Ab-209) antibody (E021226, Line 1 and 2) and eIF4E (phospho-Ser209) antibody (E011233, Line 3 and 4).

For Research Use Only