



Stathmin 1 (Phospho-Ser15) Antibody

E011234

Catalog Number: E011234-1, E011234-2

Amount: 50µg/50µl, 100µg/100µl

Swiss-Prot No. : P16949

Form of Antibody: Rabbit IgG in phosphate buffered saline (without Mg^{2+} and Ca^{2+}), pH 7.4, 150mM NaCl, 0.02% sodium azide and 50% glycerol.

Storage/Stability: Store at -20°C/1 year

Immunogen: The antiserum was produced against synthesized phosphopeptide derived from human Stathmin 1 around the phosphorylation site of serine 15 (R-A-S^P-G-Q).

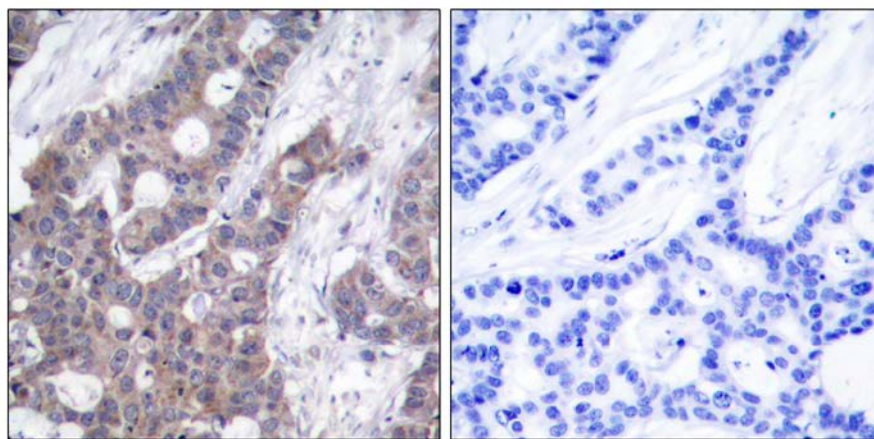
Purification: The antibody was affinity-purified from rabbit antiserum by affinity-chromatography using epitope-specific phosphopeptide. The antibody against non-phosphopeptide was removed by chromatography using non-phosphopeptide corresponding to the phosphorylation site.

Specificity/Sensitivity: Stathmin 1 (phospho-Ser15) antibody detects endogenous levels of Stathmin 1 only when phosphorylated at serine 15.

Reactivity: Human, Mouse, Rat

Applications: IHC: 1:50~1:100

References: Larsson N, et al. (1999) Mol Cell Biol; 19(3): 2242-2250
Küntziger T, et al. (2001) Mol Biol Cell; 12(2): 437-448
Vadlamudi RK, et al. (2005) Mol Cell Biol; 25(9): 3726-3736
Vázquez-Boland JA, et al. (2001) Clin Microbiol Rev; 14(3): 584-640
Howell B, et al. (1999) Mol Biol Cell; 10(1): 105-118



P-Peptide

-

+

Immunohistochemical analysis of paraffin-embedded human breast carcinoma tissue, using Stathmin 1 (phospho-Ser15) antibody (E011234).

For Research Use Only