



IRS-1 (Phospho-Ser307) Antibody

E011235

Catalog Number: E011235-1, E011235-2

Amount: 50µg/50µl, 100µg/100µl

Swiss-Prot No. : P35568

Form of Antibody: Rabbit IgG in phosphate buffered saline (without Mg^{2+} and Ca^{2+}), pH 7.4, 150mM NaCl, 0.02% sodium azide and 50% glycerol.

Storage/Stability: Store at -20°C/1 year

Immunogen: The antiserum was produced against synthesized phosphopeptide derived from human IRS-1 around the phosphorylation site of serine 307 (T-E-S^P-I-T).

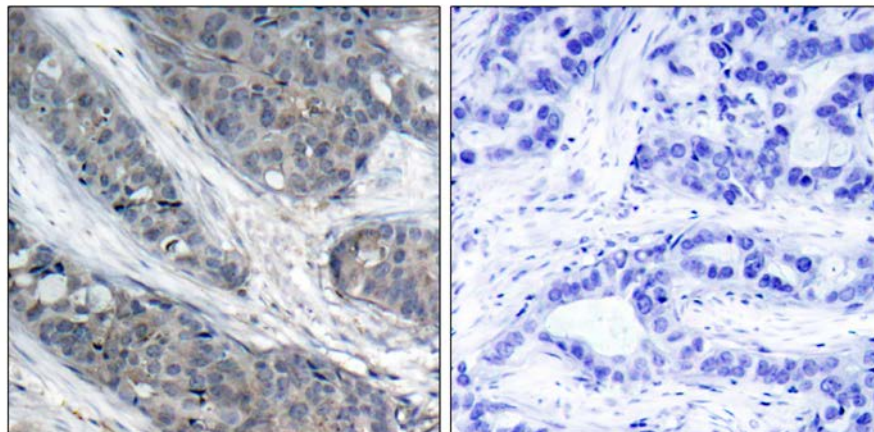
Purification: The antibody was affinity-purified from rabbit antiserum by affinity-chromatography using epitope-specific phosphopeptide. The antibody against non-phosphopeptide was removed by chromatography using non-phosphopeptide corresponding to the phosphorylation site.

Specificity/Sensitivity: IRS-1 (phospho-Ser307) antibody detects endogenous levels of IRS-1 only when phosphorylated at serine 307.

Reactivity: Human, Mouse, Rat

Applications: IHC: 1:50~1:100

References: Stepan CM, et al. (2005) Mol Cell Biol; 25(4): 1569-1575
Tuncman G, et al. (2006) Proc Natl Acad Sci U S A; 103(28): 10741-10746
Shoelson SE, et al. (2006) J Clin Invest; 116(7): 1793-1801



P-Peptide

-

+

Immunohistochemical analysis of paraffin-embedded human breast carcinoma tissue, using IRS-1 (phospho-Ser307) antibody (E011235).

For Research Use Only