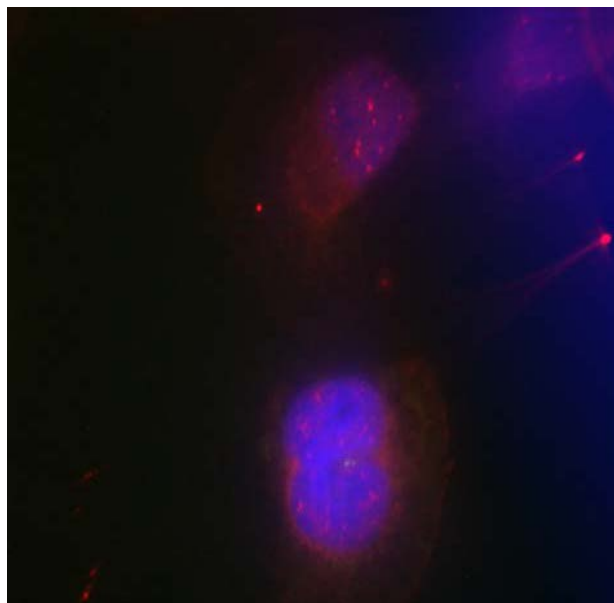




BRCA1 (Phospho-Ser988) Antibody

E011237

- Catalog Number:** E011237-1, E011237-2
- Amount:** 50µg/50µl, 100µg/100µl
- Form of Antibody:** Rabbit IgG in phosphate buffered saline (without Mg^{2+} and Ca^{2+}), pH 7.4, 150mM NaCl, 0.02% sodium azide and 50% glycerol.
- Storage/Stability:** Store at -20°C/1 year
- Immunogen:** The antiserum was produced against synthesized phosphopeptide derived from human BRCA1 around the phosphorylation site of serine 988 (I-K-S^P-F-V).
- Purification:** The antibody was affinity-purified from rabbit antiserum by affinity-chromatography using epitope-specific phosphopeptide. The antibody against non-phosphopeptide was removed by chromatography using non-phosphopeptide corresponding to the phosphorylation site.
- Specificity/Sensitivity:** BRCA1 (phospho-Ser988) antibody detects endogenous levels of BRCA1 only when phosphorylated at serine 988.
- Reactivity:** Human
- Applications:** IF:1:100~1:200
- Swiss-Prot No. :** P38398
- References:** Scully, R. and Livingston, D.M. (2000) Nature 408, 429-432.
Tutt, A. and Ashworth, A. (2002) Trends Mol. Med. 8, 571-576.
Okada, S. and Ouchi, T. (2003) J. Biol. Chem. 278, 2015-2020.



Immunofluorescence staining of methanol-fixed HeLa cells using BRCA1 (phospho-Ser988) antibody (E011237, Red).

For Research Use Only