



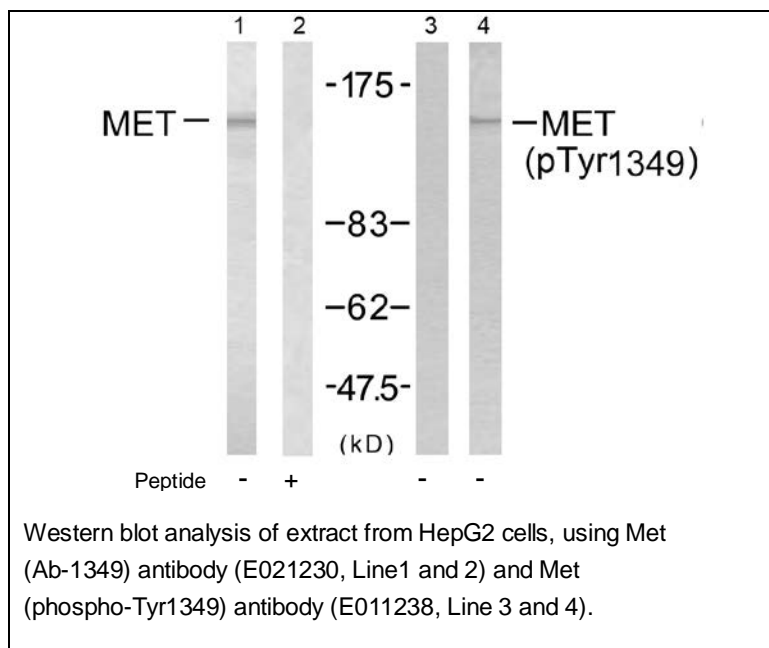
Met (Phospho-Tyr1349) Antibody

E011238**Catalog Number:** E011238-1, E011238-2**Amount:** 50µg/50µl, 100µg/100µl**Swiss-Prot No. :** P08581**Form of Antibody:** Rabbit IgG in phosphate buffered saline (without Mg^{2+} and Ca^{2+}), pH 7.4, 150mM NaCl, 0.02% sodium azide and 50% glycerol.**Storage/Stability:** Store at -20°C/1 year**Immunogen:** The antiserum was produced against synthesized phosphopeptide derived from human Met around the phosphorylation site of tyrosine 1349 (E-H-Y^P-V-H).**Purification:** The antibody was affinity-purified from rabbit antiserum by affinity-chromatography using epitope-specific phosphopeptide. The antibody against non-phosphopeptide was removed by chromatography using non-phosphopeptide corresponding to the phosphorylation site.**Specificity/Sensitivity:** Met (phospho-Tyr1349) antibody detects endogenous levels of Met only when phosphorylated at tyrosine 1349.**Reactivity:** Human, Mouse, Rat**Applications:** WB: 1:500~1:1000**References:** Fan S, et al. (2001) Mol Cell Biol; 21(15): 4968-4984

Schiering N, et al. (2003) Proc Natl Acad Sci U S A; 100(22): 12654-12659

Plopper GE, et al. (1995) Mol Biol Cell; 6(10): 1349-1365

Ponzetto C, et al. (1993) Mol Cell Biol; 13(8): 4600-4608

**For Research Use Only**