



CDC2 (Phospho-Tyr15) Antibody

E011244

Catalog Number: E011244-1, E011244-2

Amount: 50µg/50µl, 100µg/100µl

Swiss-Prot No.: P06493

Form of Antibody: Rabbit IgG in phosphate buffered saline (without Mg^{2+} and Ca^{2+}), pH 7.4, 150mM NaCl, 0.02% sodium azide and 50% glycerol.

Storage/Stability: Store at -20°C/1 year

Immunogen: The antiserum was produced against synthesized phosphopeptide derived from human CDC2 around the phosphorylation site of tyrosine 15 (G-T-Y^P-G-V).

Purification: The antibody was affinity-purified from rabbit antiserum by affinity-chromatography using epitope-specific phosphopeptide. The antibody against non-phosphopeptide was removed by chromatography using non-phosphopeptide corresponding to the phosphorylation site.

Specificity/Sensitivity: CDC2 (phospho-Tyr15) antibody detects endogenous levels of CDC2 only when phosphorylated at tyrosine 15.

Reactivity: Human, Mouse, Rat

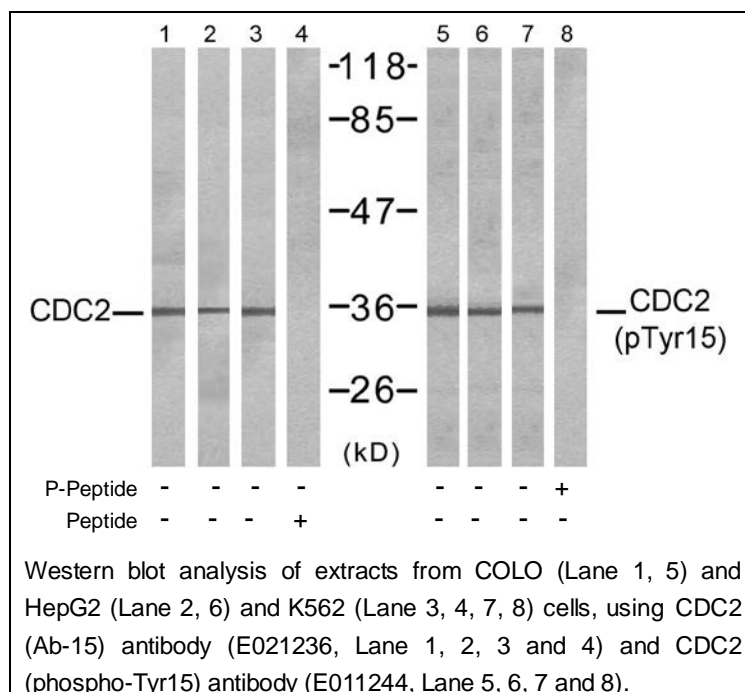
Applications: WB: 1:500~1:1000

References: Y Gu, et al. (1992) EMBO J. 11(11): 3995–4005.

P Jin, et al. (1996) Cell Biology, Vol 134: 963-970,

Tyagi, et al. (2005) Alpha1Carcinogenesis, Volume 26: 1978-1987(10)

Xiang S. et al. (1997) The EMBO Journal 16: 182–192



For Research Use Only