



p44/42 MAP Kinase (Phospho-Thr202) Antibody

E011245

Catalog Number: E011245-1, E011245-2

Amount: 50µg/50µl, 100µg/100µl

Swiss-Prot No.: P27361

Form of Antibody: Rabbit IgG in phosphate buffered saline (without Mg^{2+} and Ca^{2+}), pH 7.4, 150mM NaCl, 0.02% sodium azide and 50% glycerol.

Storage/Stability: Store at -20°C/1 year

Immunogen: The antiserum was produced against synthesized phosphopeptide derived from human p44/42 MAP Kinase around the phosphorylation site of threonine 202 (F-L-T^P-E-Y).

Purification: The antibody was affinity-purified from rabbit antiserum by affinity-chromatography using epitope-specific phosphopeptide. The antibody against non-phosphopeptide was removed by chromatography using non-phosphopeptide corresponding to the phosphorylation site.

Specificity/Sensitivity: p44/42 MAP Kinase (phospho-Thr202) antibody detects endogenous levels of p44/42 MAP Kinase only when phosphorylated at threonine 202

Reactivity: Human, Mouse, Rat

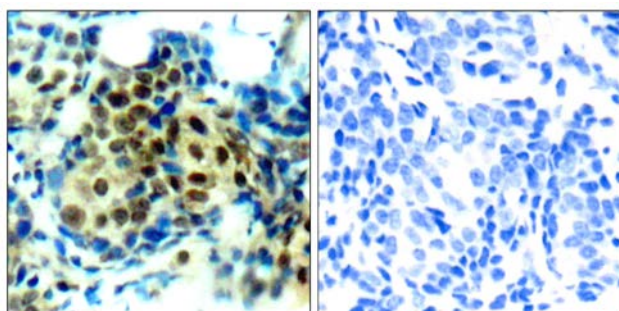
Applications: WB: 1:500~1:1000 IHC: 1:50-1:100 IF: 1:100~1:200

References: TETE HANNKEN, et al. (2000) Am Soc Nephrol 11:1387-1397

Omar D. PerezNature et al. (2002) Biotechnology 20: 155 - 162

Jingui Yu, et al. (2005) Anesth Analg 101: 315-321

Hironobu Ihn et al.(2000) Immunology 165: 2149-2155

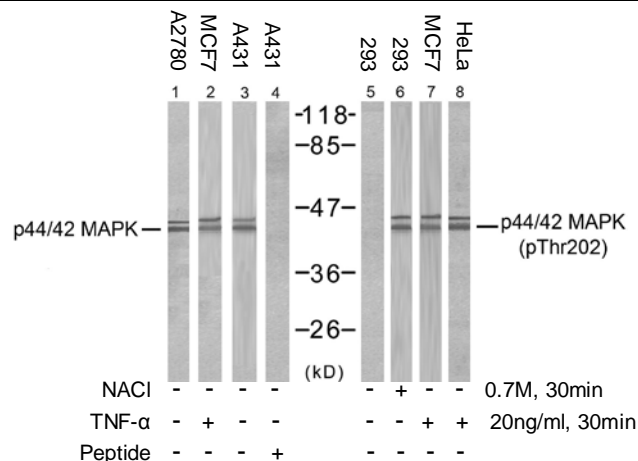


P-Peptide

-

+

Immunohistochemical analysis of paraffin-embedded human breast carcinoma tissue using p44/42 MAP Kinase (phospho-Thr202) antibody (E011245).



Western blot analysis of extracts from MCF7, 293, A431, A2780 and HeLa cells, using p44/42 MAP Kinase (Ab-202) antibody (E021237, Line 1 2 3 4) and p44/42 MAP Kinase (phospho-Thr202) antibody (E011245, Line 5 6 7 8).

For Research Use Only