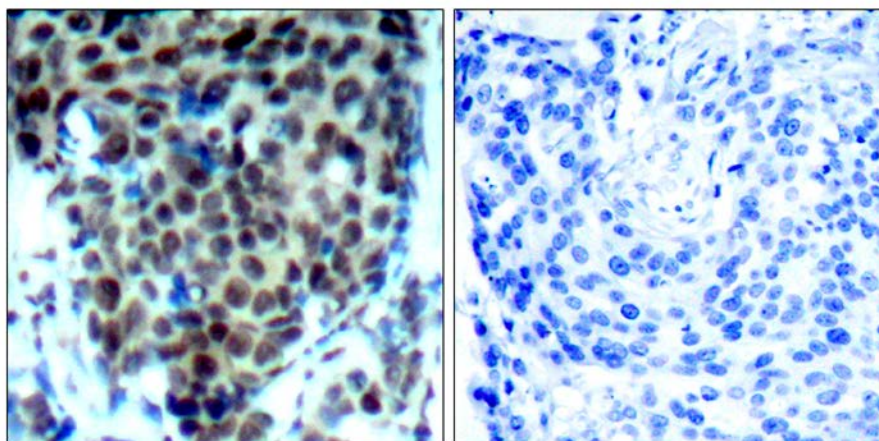




## p38 MAPK (Phospho-Thr180) Antibody

E011252

**Catalog Number:** E011252-1, E011252-2**Amount:** 50µg/50µl, 100µg/100µl**Swiss-Prot No. :** Q16539**Form of Antibody:** Rabbit IgG in phosphate buffered saline (without  $Mg^{2+}$  and  $Ca^{2+}$ ), pH 7.4, 150mM NaCl, 0.02% sodium azide and 50% glycerol.**Storage/Stability:** Store at -20°C/1 year**Immunogen:** The antiserum was produced against synthesized phosphopeptide derived from human p38 MAPK around the phosphorylation site of threonine 180 (E-M-T<sup>P</sup>-G-Y).**Purification:** The antibody was affinity-purified from rabbit antiserum by affinity-chromatography using epitope-specific phosphopeptide. The antibody against non-phosphopeptide was removed by chromatography using non-phosphopeptide corresponding to the phosphorylation site.**Specificity/Sensitivity:** p38 MAPK (phospho-Thr180) antibody detects endogenous levels of p38 MAPK only when phosphorylated at threonine 180.**Reactivity:** Human, Mouse, Rat**Applications:** IHC: 1:50~1:100**References:** Kim JE, et al. (2005) J Proteome Res Jul-Aug; 4(4): 1339-1346  
Meng F, et al. (2005) Am J Physiol Cell Physiol May 25  
Jin ZH, et al. (2005) Oncogene Mar 17; 24(12): 1973-1981

P-Peptide

-

+

Immunohistochemical analysis of paraffin-embedded human breast carcinoma tissue using p38 MAPK (phospho-Thr180) antibody (E011252).

**For Research Use Only**