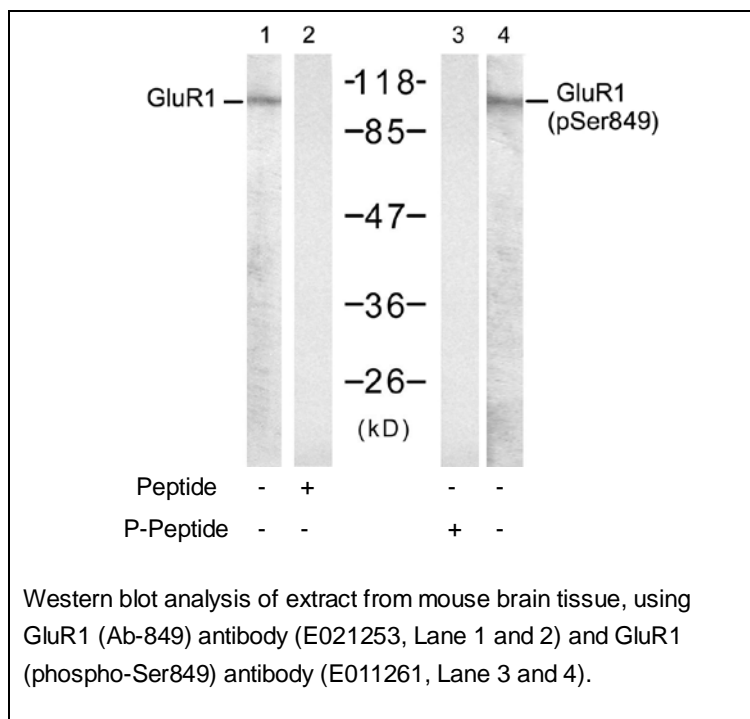




GluR1 (phospho-Ser849) Antibody

E011261

- Catalog Number:** E011261-1, E011261-2
- Amount:** 50µg/50µl, 100µg/100µl
- Swiss-Prot No. :** P42261
- Form of Antibody:** Rabbit IgG in phosphate buffered saline (without Mg^{2+} and Ca^{2+}), pH 7.4, 150mM NaCl, 0.02% sodium azide and 50% glycerol.
- Storage/Stability:** Store at -20°C/1 year
- Immunogen:** The antiserum was produced against synthesized phosphopeptide derived from human GluR1 around the phosphorylation site of serine 849 (Q-Q-S^P-I-N).
- Purification:** The antibody was affinity-purified from rabbit antiserum by affinity-chromatography using epitope-specific phosphopeptide. The antibody against non-phosphopeptide was removed by chromatography using non-phosphopeptide corresponding to the phosphorylation site.
- Specificity/Sensitivity:** GluR1(phospho-Ser849) Antibody detects endogenous levels of GluR1 only when phosphorylated at serine 849.
- Reactivity:** Human, Mouse, Rat
- Applications:** WB: 1:500~1:1000
- References:** Emamian ES, et al. (2004) J Neurosci. 24(7): 1561-4
Palmer, C.L. et al. (2005) Pharmacol. Rev. 57, 253-277.



For Research Use Only