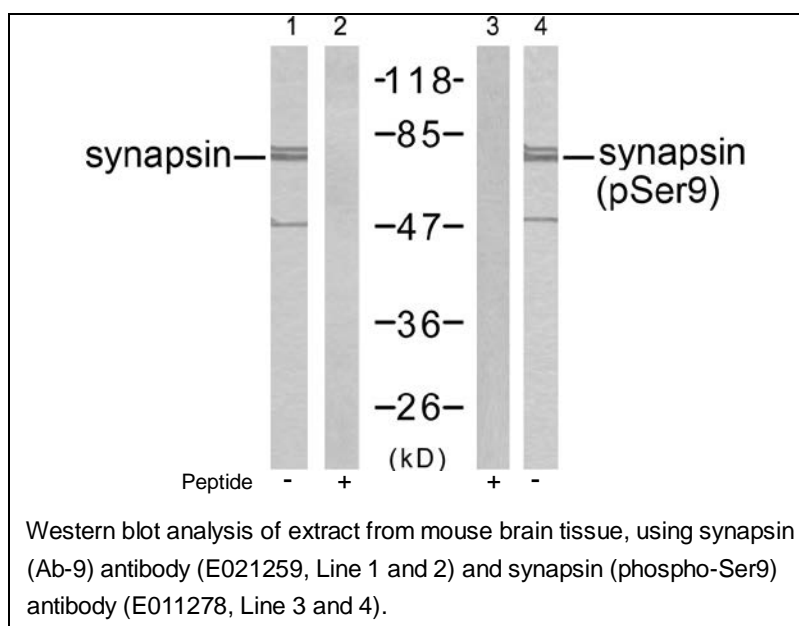




## synapsin (Phospho-Ser9) Antibody

E011267

- Catalog Number:** E011267-1, E011267-2  
**Amount:** 50µg/50µl, 100µg/100µl  
**Swiss-Prot No. :** P17600  
**All Names:** SYN1, Synapsin-1  
**All Sites:** Human: Ser9; Mouse: Ser9; Rat: Ser9  
**Form of Antibody:** Rabbit IgG in phosphate buffered saline (without  $Mg^{2+}$  and  $Ca^{2+}$ ), pH 7.4, 150mM NaCl, 0.02% sodium azide and 50% glycerol.  
**Storage/Stability:** Store at -20 °C/1 year  
**Immunogen:** The antiserum was produced against synthesized phosphopeptide derived from human synapsin around the phosphorylation site of serine 9 (R-L-S<sup>P</sup>-D-S).  
**Purification:** The antibody was affinity-purified from rabbit antiserum by affinity-chromatography using epitope-specific phosphopeptide. The antibody against non-phosphopeptide was removed by chromatography using non-phosphopeptide corresponding to the phosphorylation site.  
**Specificity/Sensitivity:** synapsin (phospho-Ser9) antibody detects endogenous levels of synapsin only when phosphorylated at serine 9.  
**Reactivity:** Human, Mouse, Rat  
**Applications:** WB: 1:500~1:1000  
**References:** Diviya Sinha, et.al. (2005) Am J Physiol Renal Physiol ; 288: F703 - F713.  
Franco Onofri, et.al. (2000) J. Biol. Chem ; 275: 29857.  
Dario Bonanomi, et.al. (2005) J. Neurosci; 25: 7299 - 7308.  
Hiroshi Tokumitsu, et.al. (2005) J. Biol. Chem ; 280: 35108 - 35118.

**For Research Use Only**