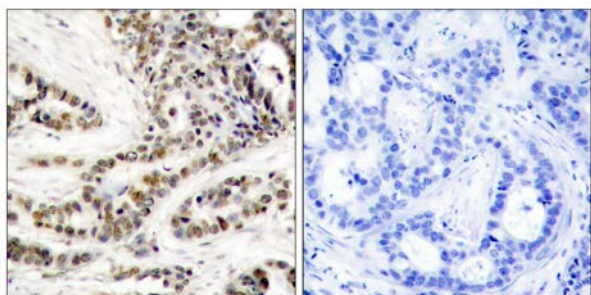




CREB (Phospho-Ser129) Antibody

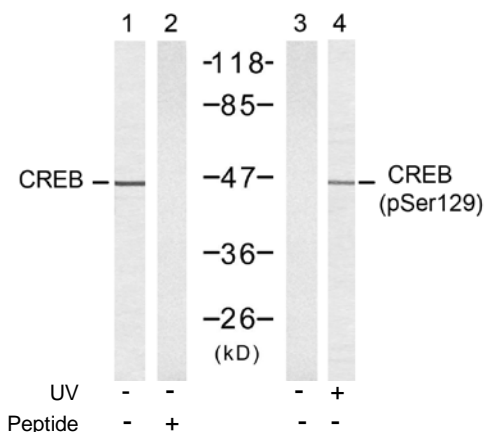
E011273

- Catalog Number:** E011273-1, E011273-2
- Amount:** 50µg/50µl, 100µg/100µl
- Swiss-Prot No. :** P16220
- Form of Antibody:** Rabbit IgG in phosphate buffered saline (without Mg^{2+} and Ca^{2+}), pH 7.4, 150mM NaCl, 0.02% sodium azide and 50% glycerol.
- Storage/Stability:** Store at -20°C/1 year
- Immunogen:** The antiserum was produced against synthesized phosphopeptide derived from human CREB around the phosphorylation site of serine 129 (I-L-S^P-R-R).
- Purification:** The antibody was affinity-purified from rabbit antiserum by affinity-chromatography using epitope-specific phosphopeptide. The antibody against non-phosphopeptide was removed by chromatography using non-phosphopeptide corresponding to the phosphorylation site.
- Specificity/Sensitivity:** CREB (phospho-Ser129) antibody detects endogenous levels of CREB only when phosphorylated at serine 129.
- Reactivity:** Human, Mouse, Rat
- Applications:** WB: 1:500~1:1000 IHC: 1:50~1:100
- References:** Chrystelle V. Garat, et al. (2006) Mol. Cell. Biol ; 26: 4934 - 4948.
Lilah Rothem, et al. (2004) Mol. Pharmacol ; 66: 1536 - 1543.
Darren R. Tyson, et al. (2002) Endocrinology; 143: 674.
Kyung-Woo Park, et al. (2003) Arterioscler. Thromb. Vasc. Biol ; 23: 1364.



P-Peptide - +

Immunohistochemical analysis of paraffin-embedded human breast carcinoma tissue using CREB (phospho-Ser129) antibody (E011273).



Western blot analysis of extracts from 293 cells untreated or treated with UV, using CREB (Ab-129) antibody (E021265, Lane 1 and 2) and CREB (phospho-Ser129) antibody (E011273, Lane 1 and 2).

For Research Use Only