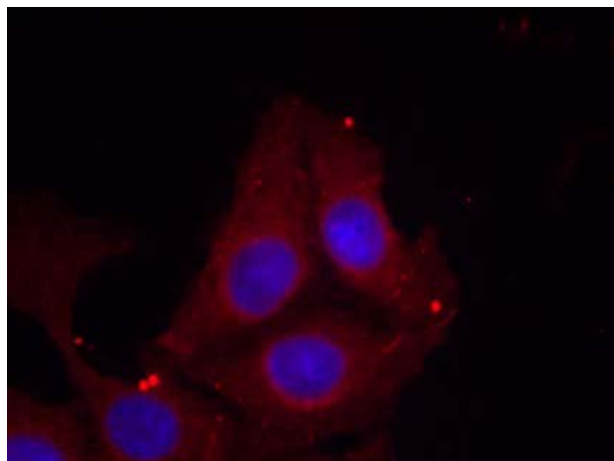




GAP43 (Phospho-Ser41) Antibody

E011281

- Catalog Number:** E011281-1, E011281-2
- Amount:** 50µg/50µl, 100µg/100µl
- Form of Antibody:** Rabbit IgG in phosphate buffered saline (without Mg^{2+} and Ca^{2+}), pH 7.4, 150mM NaCl, 0.02% sodium azide and 50% glycerol.
- Storage/Stability:** Store at -20°C/1 year
- Immunogen:** The antiserum was produced against synthesized phosphopeptide derived from human GAP43 around the phosphorylation site of Ser41 (Q-A-S^P-F-R).
- Purification:** The antibody was affinity-purified from rabbit antiserum by affinity-chromatography using epitope-specific phosphopeptide. The antibody against non-phosphopeptide was removed by chromatography using non-phosphopeptide corresponding to the phosphorylation site.
- Specificity/Sensitivity:** GAP43 (Phospho-Ser41) Antibody detects endogenous levels of GAP43 only when phosphorylated at Ser41.
- Reactivity:** Human, Mouse, Rat
- Applications:** IF:1:100~1:200
- Swiss-Prot No. :** P17677
- References:** Rachael L. Neve, et.al. (1998) J. Neurosci; 18: 7757.
Yiping Shen, et.al. (2002) J. Neurosci; 22: 239.
Chantal Gamby, et.al. (1996) J. Biol. Chem; 271: 26698.



Immunofluorescence staining of methanol-fixed HeLa cells using GAP43 (Phospho-Ser41) Antibody (E011281, Red).

For Research Use Only