



Glutamate receptor 2 (Precursor) (phospho-Ser880) antibody

E011292

Catalog Number: E011292-1, E011292-2

Amount: 50µg/50µl, 100µg/100µl

Swiss-Prot No. : P42262

Form of Antibody: Rabbit IgG in phosphate buffered saline (without Mg^{2+} and Ca^{2+}), pH 7.4, 150mM NaCl, 0.02% sodium azide and 50% glycerol.

Storage/Stability: Store at -20°C/1 year

Immunogen: The antiserum was produced against synthesized phosphopeptide derived from human Glutamate receptor 2 (Precursor) around the phosphorylation site of serine 880 (I-E-S^P-V-K) (CYNVYGIESVKI) .

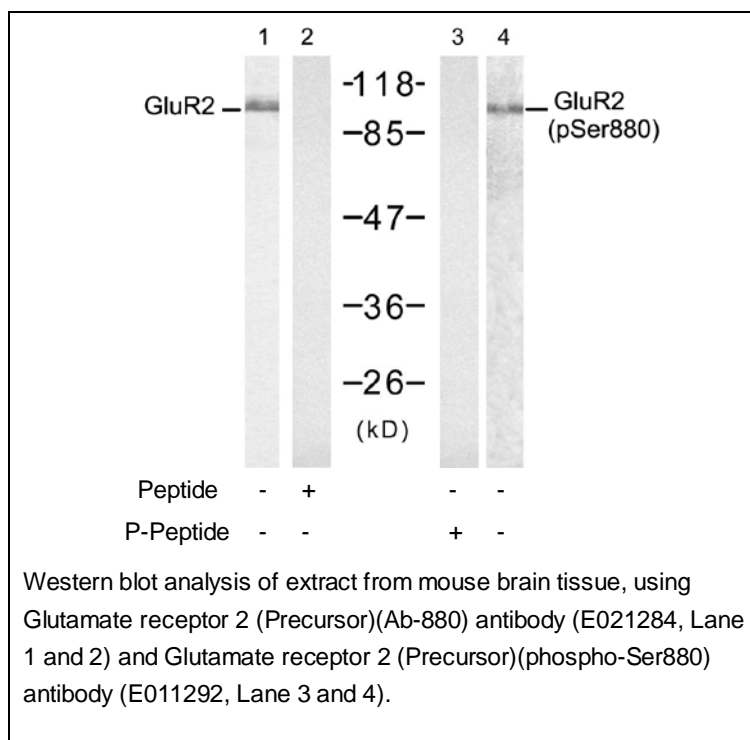
Purification: The antibody was affinity-purified from rabbit antiserum by affinity-chromatography using epitope-specific phosphopeptide. The antibody against non-phosphopeptide was removed by chromatography using non-phosphopeptide corresponding to the phosphorylation site.

Specificity/Sensitivity: Glutamate receptor 2 (Precursor)(phospho-Ser880) antibody detects endogenous levels of Glutamate receptor 2 (Precursor) only when phosphorylated at serine 880

Reactivity: Human, Mouse, Rat

Applications: WB: 1:500~1:1000

References: Cull-Candy, S. et al. (2006) Curr. Opin. Neurobiol. 16, 288-297.
Hanley JG, et al. (2002) Neuron. 34(1): 53-67



For Research Use Only