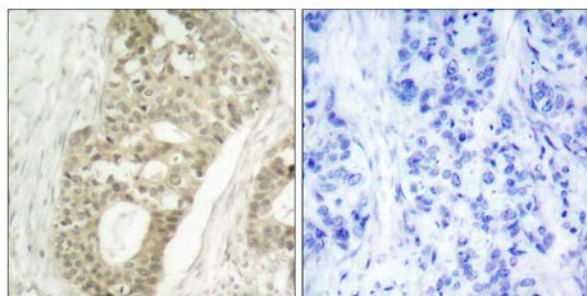




PKC δ (Phospho-Ser645) Antibody

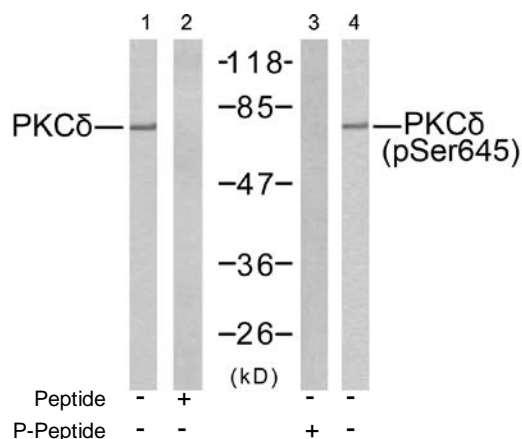
E011296

- Catalog Number:** E011296-1, E011296-2
- Amount:** 50 μ g/50 μ l, 100 μ g/100 μ l
- Swiss-Prot No. :** Q05655
- All Names:** PRKCD, Protein kinase C delta type
- Form of Antibody:** Rabbit IgG in phosphate buffered saline (without Mg²⁺ and Ca²⁺), pH 7.4, 150mM NaCl, 0.02% sodium azide and 50% glycerol.
- Storage/Stability:** Store at -20 °C/1 year
- Immunogen:** The antiserum was produced against synthesized phosphopeptide derived from human PKC δ around the phosphorylation site of serine 645 (R-L-S^P-Y-S).
- Purification:** The antibody was affinity-purified from rabbit antiserum by affinity-chromatography using epitope-specific phosphopeptide. The antibody against non-phosphopeptide was removed by chromatography using non-phosphopeptide corresponding to the phosphorylation site.
- Specificity/Sensitivity:** PKC δ (phospho-Ser645) antibody detects endogenous levels of PKC δ only when phosphorylated at serine 645.
- Reactivity:** Human, Mouse, Rat
- Applications:** WB: 1:500~1:1000 IHC: 1:50~1:100
- References:** Kei Sakamoto, et.al. (2003) Am J Physiol Endocrinol Metab ; 285: E1081 - E1088.
Ling Zhang, et.al. (2004) J. Biol. Chem ; 279: 28315 - 28319.
Kristof Van Kolen et.al. (2006) FEBS J ; 273: 1843 - 1854.
Martin Villalba, et.al. (2002) J. Cell Biol ; 157: 253.



P-Peptide - +

Immunohistochemical analysis of paraffin-embedded human breast carcinoma tissue using PKC δ (phospho-Ser645) antibody (E011296).



Western blot analysis of extracts from MCF7 cells using PKC δ (Ab-645) antibody (E021288, Line 1 and 2) and PKC δ (phospho-Ser645) antibody (E011296, Line 3 and 4).