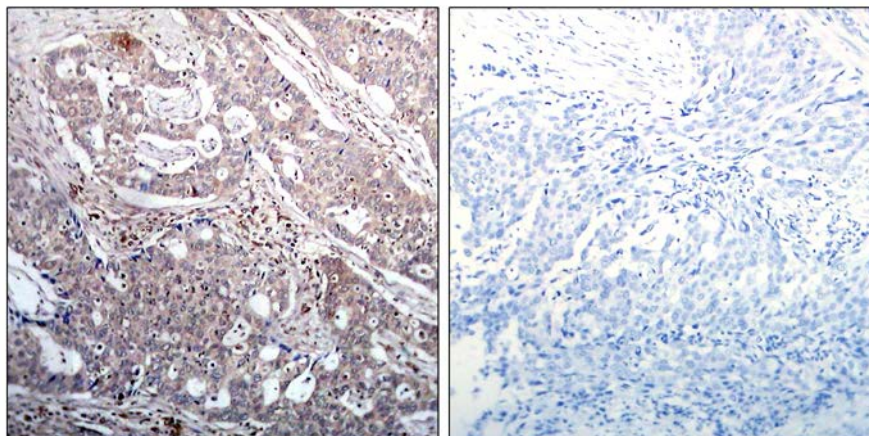




I κ B- β (Phospho-Ser23) Antibody

E011304

- Catalog Number:** E011304 -1, E011304 -2
Amount: 50 μ g/50 μ l, 100 μ g/100 μ l
Swiss-Prot No. : Q15653
Form of Antibody: Rabbit IgG in phosphate buffered saline (without Mg²⁺ and Ca²⁺), pH 7.4, 150mM NaCl, 0.02% sodium azide and 50% glycerol.
Storage/Stability: Store at -20°C/1 year
Immunogen: The antiserum was produced against synthesized phosphopeptide derived from human I κ B- β around the phosphorylation site of serine 23 (L-G-S^P-L-G).
Purification: The antibody was affinity-purified from rabbit antiserum by affinity-chromatography using epitope-specific immunogen.
Specificity/Sensitivity: I κ B- β (Phospho-Ser23) antibody detects endogenous levels of total I κ B- β protein.
Reactivity: Human, Mouse, Rat
Applications: IHC: 1:50-1:100
References: Shirane, M. et al. (1999) J Biol Chem 274, 28169-28174.
DiDonato J, et al. (1996) Mol Cell Biol 16(4): 1295-304



P-Peptide

-

+

Immunohistochemical analysis of paraffin-embedded human breast carcinoma tissue, using I κ B- β (Phospho-Ser23) antibody (E011304).

For Research Use Only