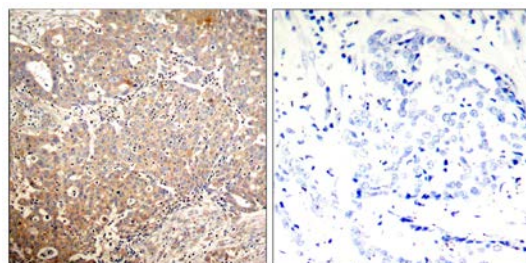




Keratin 18 (Phospho-Ser33) Antibody

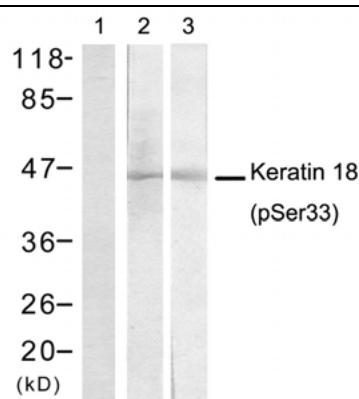
E011306

- Catalog Number:** E011306-1, E011306-2
- Amount:** 50µg/50µl, 100µg/100µl
- Swiss-Prot No. :** P05783
- Form of Antibody:** Rabbit IgG in phosphate buffered saline (without Mg^{2+} and Ca^{2+}), pH 7.4, 150mM NaCl, 0.02% sodium azide and 50% glycerol.
- Storage/Stability:** Store at -20°C/1 year
- Immunogen:** The antiserum was produced against synthesized phosphopeptide derived from human Keratin 18 around the phosphorylation site of serine 33 (A-A-S^P-V-Y).
- Purification:** The antibody was affinity-purified from rabbit antiserum by affinity-chromatography using epitope-specific phosphopeptide. The antibody against non-phosphopeptide was removed by chromatography using non-phosphopeptide corresponding to the phosphorylation site.
- Specificity/Sensitivity:** Keratin 18 (Phospho-Ser33) antibody detects endogenous levels of Keratin 18 only when phosphorylated at serine 33.
- Reactivity:** Human
- Applications:** IHC: 1:50-1:100 WB: 1:500-1000
- References:** Ramaekers, F.C. and Bosman, F.T. (2004) J. Pathol. 204, 351-354.
Chang, L. and Goldman, R.D. (2004) Nat. Rev. Mol. Cell Biol. 5, 601-613.
Moll, R. et al. (1982) Cell 31, 11-24.



P-Peptide - +

Immunohistochemical analysis of paraffin-embedded human breast carcinoma tissue using Keratin 18 (Phospho-Ser33) antibody (E011306).



P-Peptide + - -

Western blot analysis of extracts from A431 cells (Lane 1 and 2) and EC-304 cells (Lane 3) using Keratin 18 (Phospho-Ser33) antibody (E011306).

For Research Use Only