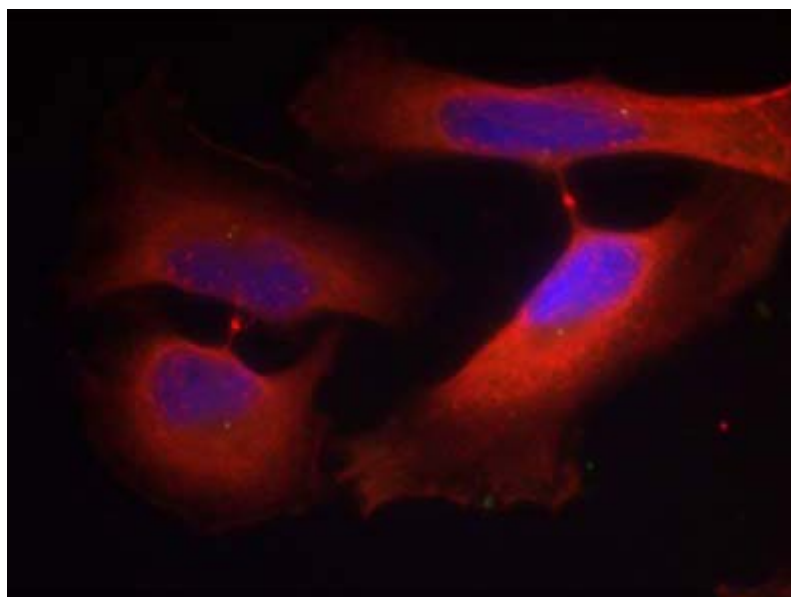




Keratin 8 (Phospho-Ser74) Antibody

E011307

- Catalog Number:** E011307-1, E011307-2
- Amount:** 50µg/50µl, 100µg/100µl
- Form of Antibody:** Rabbit IgG in phosphate buffered saline (without Mg^{2+} and Ca^{2+}), pH 7.4, 150mM NaCl, 0.02% sodium azide and 50% glycerol.
- Storage/Stability:** Store at -20°C/1 year
- Immunogen:** The antiserum was produced against synthesized phosphopeptide derived from human Keratin 8 around the phosphorylation site of serine 74 (L-L-S^P-P-L).
- Purification:** The antibody was affinity-purified from rabbit antiserum by affinity-chromatography using epitope-specific phosphopeptide. The antibody against non-phosphopeptide was removed by chromatography using non-phosphopeptide corresponding to the phosphorylation site.
- Specificity/Sensitivity:** Keratin 8 (Phospho-Ser74) Antibody detects endogenous levels of Keratin 8 only when phosphorylated at serine 74.
- Reactivity:** Human
- Applications:** IF:1:100~1:200
- Swiss-Prot No. :** P05787
- References:** Nakamichi I, et al. (2002) Mol Biol Cell; 13(10): 3441-3451.
Prochasson P, et al. (2002) Nucleic Acids Res; 30(15): 3312-3322.
Pankov R, et al. (1994) Proc Natl Acad Sci U S A; 91(3): 873-877.
Thorey IS, et al. (1993) Mol Cell Biol; 13(11): 6742-6751



Immunofluorescence staining of methanol-fixed HeLa cells using Keratin 8 (Phospho-Ser74) Antibody (E011307, Red).

For Research Use Only