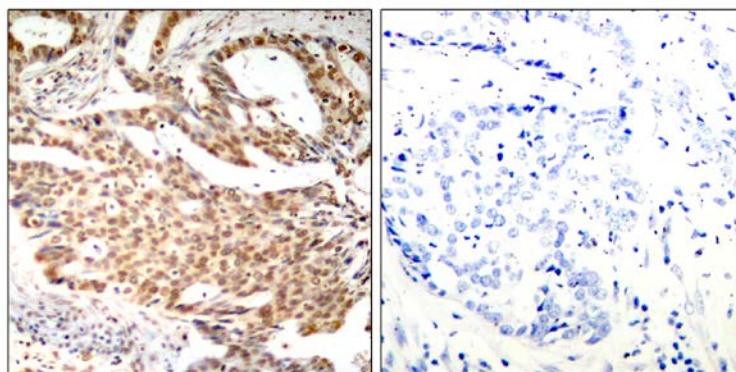




## MEF2A (Phospho-Ser408) Antibody

**E011309**

- Catalog Number:** E011309-1, E011309-2  
**Amount:** 50µg/50µl, 100µg/100µl  
**Swiss-Prot No. :** Q02078  
**Form of Antibody:** Rabbit IgG in phosphate buffered saline (without  $Mg^{2+}$  and  $Ca^{2+}$ ), pH 7.4, 150mM NaCl, 0.02% sodium azide and 50% glycerol.  
**Storage/Stability:** Store at -20°C/1 year  
**Immunogen:** The antiserum was produced against synthesized phosphopeptide derived from human MEF2A around the phosphorylation site of serine 408 (P-I-S<sup>P</sup>-P-P).  
**Purification:** The antibody was affinity-purified from rabbit antiserum by affinity-chromatography using epitope-specific phosphopeptide. The antibody against non-phosphopeptide was removed by chromatography using non-phosphopeptide corresponding to the phosphorylation site.  
**Specificity/Sensitivity:** MEF2A (Phospho-Ser408) antibody detects endogenous levels of MEF2A only when phosphorylated at serine 408.  
**Reactivity:** Human, Mouse, Rat  
**Applications:** IHC: 1:50-1:100  
**References:** Okamoto SI, et al. (2002) Proc Natl Acad Sci USA; 99(6): 3974-3979.  
Quinn ZA, et al. (2001) Nucleic Acids Res; 29(3): 732-742.  
Kato Y, et al. (2000) J Biol Chem. 275(24): 18534-18540.  
De Angelis L, et al. (1998) Proc Natl Acad Sci USA; 95(21): 12358-12363.



P-Peptide

-

+

Immunohistochemical analysis of paraffin-embedded human breast carcinoma tissue using MEF2A (Phospho-Ser408) antibody (E011309).

**For Research Use Only**