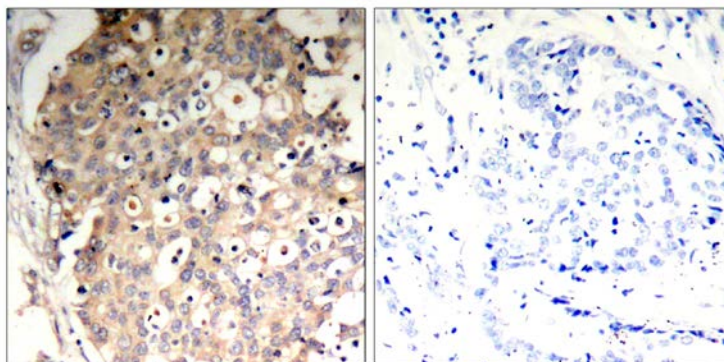




## SHP-1 (Phospho-Tyr536) Antibody

E011318

- Catalog Number:** E011318-1, E011318-2
- Amount:** 50µg/50µl, 100µg/100µl
- Swiss-Prot No. :** P29350
- Form of Antibody:** Rabbit IgG in phosphate buffered saline (without  $Mg^{2+}$  and  $Ca^{2+}$ ), pH 7.4, 150mM NaCl, 0.02% sodium azide and 50% glycerol.
- Storage/Stability:** Store at -20°C/1 year
- Immunogen:** The antiserum was produced against synthesized phosphopeptide derived from human SHP-1 around the phosphorylation site of tyrosine 536 (S-E-Y<sup>P</sup>-G-N).
- Purification:** The antibody was affinity-purified from rabbit antiserum by affinity-chromatography using epitope-specific phosphopeptide. The antibody against non-phosphopeptide was removed by chromatography using non-phosphopeptide corresponding to the phosphorylation site.
- Specificity/Sensitivity:** SHP-1 (Phospho-Tyr536) Antibody detects endogenous levels of SHP-1 only when phosphorylated at tyrosine 536.
- Reactivity:** Human, Mouse, Rat
- Applications:** IHC: 1:50~1:100
- References:** Migone TS, et al. (1998) Proc Natl Acad Sci USA; 95(7): 3845-3850.  
Timms JF, et al.(1998) Mol Cell Biol; 18(7): 3838-3850.  
Kanagasundaram V, et al. (1999) Mol Cell Biol; 19(6): 4079-4092.  
Hauck CR, et al. (1999) Infect Immun; 67(10): 5490-5494.



P-Peptide

-

+

Immunohistochemical analysis of paraffin-embedded human breast carcinoma tissue, using SHP-1 (Phospho-Tyr536) Antibody (E011318).

**For Research Use Only**