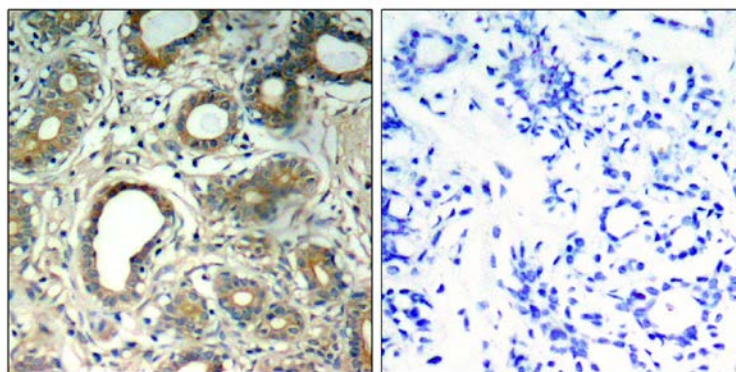




## SHP-2 (Phospho-Tyr580) Antibody

E011320

- Catalog Number:** E011320-1, E011320-2
- Amount:** 50µg/50µl, 100µg/100µl
- Swiss-Prot No. :** Q06124
- Form of Antibody:** Rabbit IgG in phosphate buffered saline (without  $Mg^{2+}$  and  $Ca^{2+}$ ), pH 7.4, 150mM NaCl, 0.02% sodium azide and 50% glycerol.
- Storage/Stability:** Store at -20°C/1 year
- Immunogen:** The antiserum was produced against synthesized phosphopeptide derived from human SHP-2 around the phosphorylation site of tyrosine 580 (R-V-Y<sup>P</sup>-E-N).
- Purification:** The antibody was affinity-purified from rabbit antiserum by affinity-chromatography using epitope-specific phosphopeptide. The antibody against non-phosphopeptide was removed by chromatography using non-phosphopeptide corresponding to the phosphorylation site.
- Specificity/Sensitivity:** SHP-2 (Phospho-Tyr580) antibody detects endogenous levels of SHP-2 only when phosphorylated at tyrosine 580.
- Reactivity:** Human, Mouse, Rat
- Applications:** IHC: 1:50-1:100
- References:** Ferjoux G, et al. (2003) Mol Biol Cell. 2003 ; 14(9): 3911-3928.  
Shi ZQ, et al. (2000) Mol Cell Biol ; 20(5): 1526-1536.  
Li C, Friedman JM. (1999) Proc Natl Acad Sci U S A ; 96(17): 9677-9682  
Mañes S, et al. (1999) Mol Cell Biol ; 19(4): 3125-3135.  
Oh ES, et al. (1999) Mol Cell Biol; 19(4): 3205-3215.



P-Peptide

-

+

Immunohistochemical analysis of paraffin-embedded human breast carcinoma tissue, using SHP-2 (Phospho-Tyr580) antibody (E011320).

**For Research Use Only**