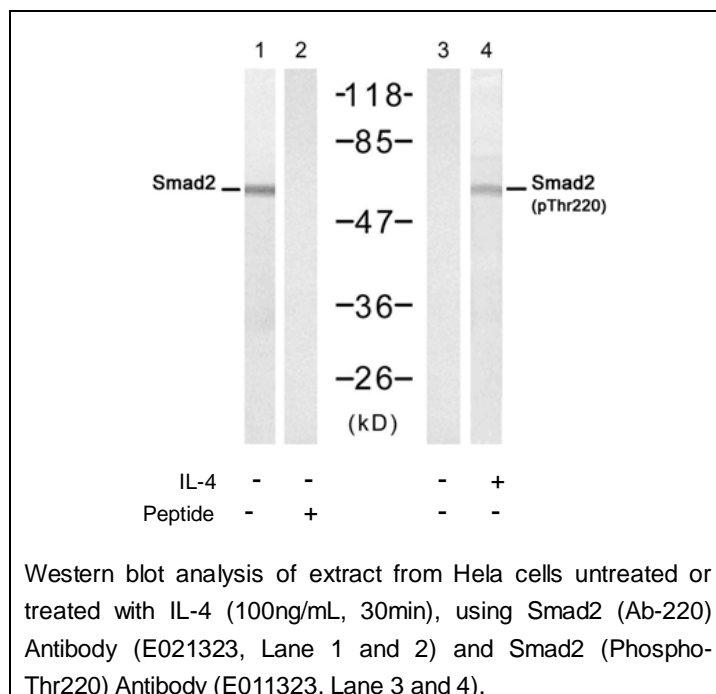




Smad2 (Phospho-Thr220) Antibody

E011323

- Catalog Number:** E011323-1, E011323-2
- Amount:** 50µg/50µl, 100µg/100µl
- Form of Antibody:** Rabbit IgG in phosphate buffered saline (without Mg²⁺ and Ca²⁺), pH 7.4, 150mM NaCl, 0.02% sodium azide and 50% glycerol.
- Storage/Stability:** Store at -20°C/1 year
- Immunogen:** The antiserum was produced against synthesized phosphopeptide derived from human Smad2 around the phosphorylation site of threonine 220 (P-E-T^P-P-P).
- Purification:** The antibody was affinity-purified from rabbit antiserum by affinity-chromatography using epitope-specific phosphopeptide. The antibody against non-phosphopeptide was removed by chromatography using non-phosphopeptide corresponding to the phosphorylation site.
- Specificity/Sensitivity:** Smad2 (Phospho-Thr220) Antibody detects endogenous levels of Smad2 only when phosphorylated at threonine 220.
- Reactivity:** Human, Mouse, Rat
- Applications:** WB: 1:500~1:1000
- Swiss-Prot No. :** Q15796
- References:** Sang Gyun Kim et al. (2004) Mol Biol Cell. February; 15(2): 420–434.
Rebecca A. Randall et al. (2004) Mol Cell Biol. February; 24(3): 1106–1121.
Kimberly A Brown et al. (2004) Breast Cancer Res.; 6(3): R215–R231.



For Research Use Only