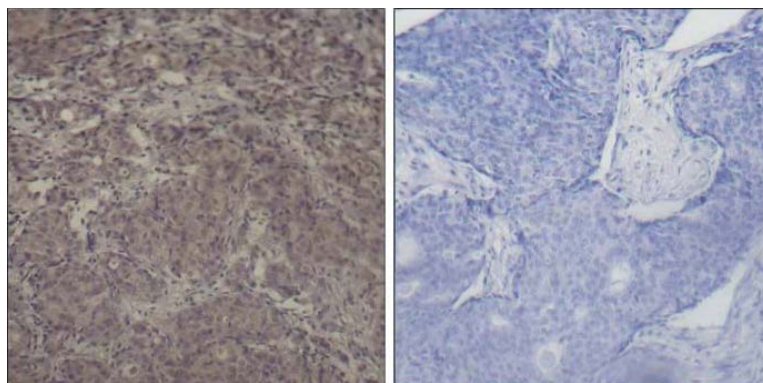




Smad3 (Phospho-Ser425) Antibody

E011325

- Catalog Number:** E011325-1, E011325-2
- Amount:** 50µg/50µl, 100µg/100µl
- Form of Antibody:** Rabbit IgG in phosphate buffered saline (without Mg²⁺ and Ca²⁺), pH 7.4, 150mM NaCl, 0.02% sodium azide and 50% glycerol.
- Storage/Stability:** Store at -20°C/1 year
- Immunogen:** The antiserum was produced against synthesized phosphopeptide derived from human Smad3 around the phosphorylation site of serine 425 (C-S-S-V-S^P).
- Purification:** The antibody was affinity-purified from rabbit antiserum by affinity-chromatography using epitope-specific phosphopeptide. The antibody against non-phosphopeptide was removed by chromatography using non-phosphopeptide corresponding to the phosphorylation site.
- Specificity/Sensitivity:** Smad3 (Phospho-Ser425) Antibody detects endogenous levels of Smad3 only when phosphorylated at serine 425.
- Reactivity:** Human, Mouse, Rat
- Applications:** IHC: 1:50-1:100 WB:1:500-1:1000
- Swiss-Prot No. :** P84022
- References:** Shi W, et al. J Cell Sci. 2007 Apr 1;120(Pt 7):1216-24
Seong HA, et al. J Biol Chem. 2007 Apr 20;282(16):12272-89
Wordinger RJ, et al. Invest Ophthalmol Vis Sci. 2007 Mar;48(3):1191-200
LeClair RJ, et al. Circ Res. 2007 Mar 30;100(6):826-33



P-peptide -

+

Immunohistochemical analysis of paraffin-embedded human breast carcinoma tissue using Smad3 (Phospho-Ser425) Antibody (E011325).

For Research Use Only