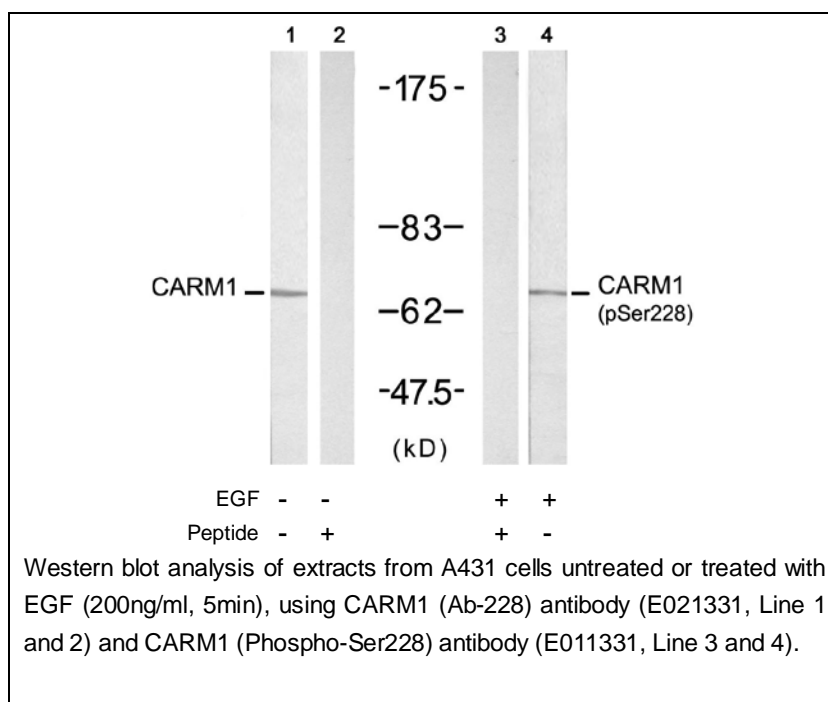




CARM1 (Phospho-Ser228) Antibody

E011331

- Catalog Number:** E011331-1, E011331-2
- Amount:** 50µg/50µl, 100µg/100µl
- Swiss-Prot No. :** Q86X55
- Form of Antibody:** Rabbit IgG in phosphate buffered saline (without Mg^{2+} and Ca^{2+}), pH 7.4, 150mM NaCl, 0.02% sodium azide and 50% glycerol.
- Storage/Stability:** Store at -20°C/1 year
- Immunogen:** The antiserum was produced against synthesized phosphopeptide derived from human CARM1 around the phosphorylation site of serine 228 (V-K-S^P-N-N).
- Purification:** The antibody was affinity-purified from rabbit antiserum by affinity-chromatography using epitope-specific phosphopeptide. The antibody against non-phosphopeptide was removed by chromatography using non-phosphopeptide corresponding to the phosphorylation site.
- Specificity/Sensitivity:** CARM1 (Phospho-Ser228) antibody detects endogenous levels of CARM1 only when phosphorylated at serine 228.
- Reactivity:** Human, Mouse, Rat
- Applications:** WB: 1:500~1:1000
- References:** Selma El Messaoudi, et al. (2006) Proc Natl Acad Sci U S A; 103(36): 13351–13356.
 Marcela Covic, et al. (2005) EMBO J; 24(1): 85–96.
 Eleni Zika et al. (2005) Proc Natl Acad Sci U S A; 102(45): 16321–16326
 Neelu Yadav et al. (2003) Proc Natl Acad Sci U S A; 100(11): 6464–6468



For Research Use Only