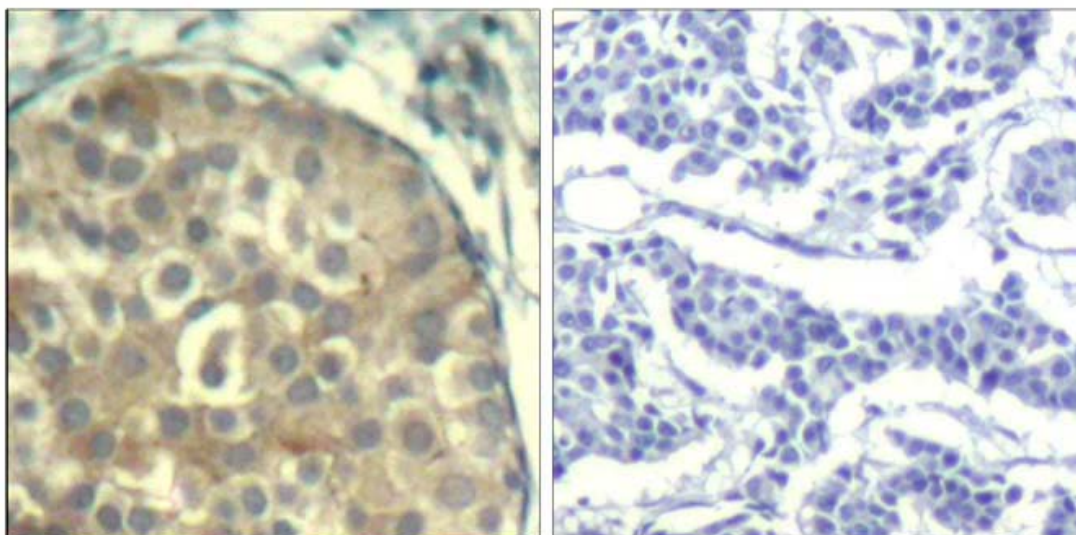




## cofilin1/cofilin2 (phospho-Tyr88) Antibody

E011507

- Catalog Number:** E011507-1, E011507-2
- Amount:** 50µg/50µl, 100µg/100µl
- Form of Antibody:** Rabbit IgG in phosphate buffered saline (without  $Mg^{2+}$  and  $Ca^{2+}$ ), pH 7.4, 150mM NaCl, 0.02% sodium azide and 50% glycerol.
- Storage/Stability:** Store at -20°C/1 year
- Immunogen:** The antiserum was produced against synthesized phosphopeptide derived from human cofilin1/ cofilin2 around the phosphorylation site of tyrosine 88 (A-T-Y<sup>P</sup>-E-T).
- Purification:** The antibody was affinity-purified from rabbit antiserum by affinity-chromatography using epitope-specific phosphopeptide. The antibody against non-phosphopeptide was removed by chromatography using non-phosphopeptide corresponding to the phosphorylation site.
- Specificity/Sensitivity:** cofilin1/cofilin2 (phospho-Tyr88) Antibody detects endogenous levels of cofilin1/cofilin2 only when phosphorylated at tyrosine 88.
- Reactivity:** Human, Mouse, Rat
- Applications:** IHC: 1:50~100
- Swiss-Prot No. :** P23528 Q9Y281
- References:** Carlier, M. et al. (1999) *J. Biol. Chem.* 274, 33827-33830.  
Arber, S. et al. (1998) *Nature* 393, 805-809.  
Yang, N. et al. (1998) *Nature* 393, 809-812.



P-Peptide

-

+

Immunohistochemical analysis of paraffin-embedded human breast carcinoma tissue using cofilin1/cofilin2 (phospho-Tyr88) Antibody (E011507).

**For Research Use Only**

