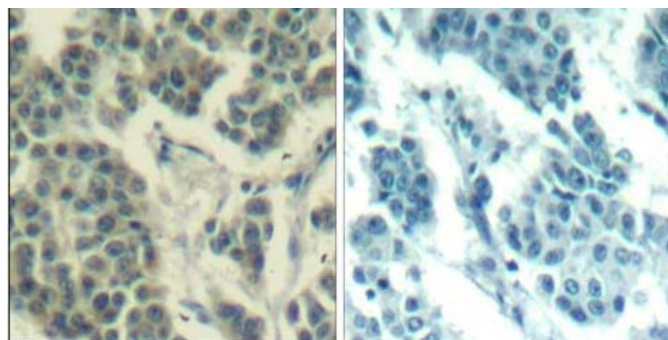




Her3/ErbB3 (phospho-Tyr1328) Antibody

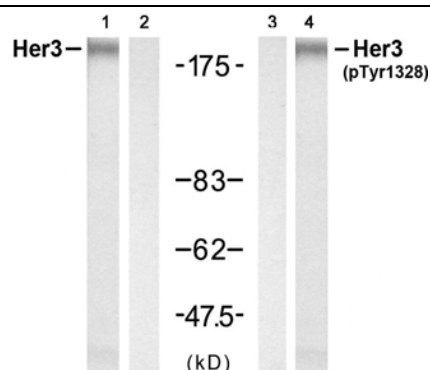
E011510

- Catalog Number:** E011510-1, E011510-2
- Amount:** 50µg/50µl, 100µg/100µl
- Form of Antibody:** Rabbit IgG in phosphate buffered saline (without Mg²⁺ and Ca²⁺), pH 7.4, 150mM NaCl, 0.02% sodium azide and 50% glycerol.
- Storage/Stability:** Store at -20 °C/1 ye
- Immunogen:** The antiserum was produced against synthesized phosphopeptide derived from human Her3/ErbB3 around the phosphorylation site of tyrosine 1328 (P-D-Y_P-W-H).
- Purification:** The antibody was affinity-purified from rabbit antiserum by affinity-chromatography using epitope-specific phosphopeptide. The antibody against non-phosphopeptide was removed by chromatography using non-phosphopeptide corresponding to the phosphorylation site.
- Specificity/Sensitivity:** Her3/ErbB3 (phospho-Tyr1328) Antibody detects endogenous levels of Her3/ErbB3 only when phosphorylated at tyrosine 1328.
- Reactivity:** Human, Mouse, Rat
- Applications:** WB: 1:500~1:1000 IHC:1:50~1:100
- Swiss-Prot No. :** P21860
- References:** Holbro, T. et al. (2003) *Proc. Natl. Acad. Sci. USA* 100, 8933-8938.
Kobayashi, M. et al. (2003) *Oncogene* 22, 1294-1301.
Kim, H.H. et al. (1994) *J. Biol. Chem.* 269, 24747-24755.
Yarden, Y. and Slwkowski, M.X. (2001) *Nature Rev. Mol. Cell. Biol.* 2, 127-137.



P-Peptide - +

Immunohistochemical analysis of paraffin- embedded human breast carcinoma tissue using Her3/ErbB3 (phospho-Tyr1328) Antibody (E011510).



	1	2	3	4
EGF	-	-	-	+
Peptide	-	+	-	-

Western blot analysis of extract from HUVEC cells using Her3/ErbB3 (Ab-1328) Antibody (E021510, Lane 1 and 2) and Her3/ErbB3 (phospho-Tyr1328) Antibody (E011510, Lane 3 and 4).

For Research Use Only