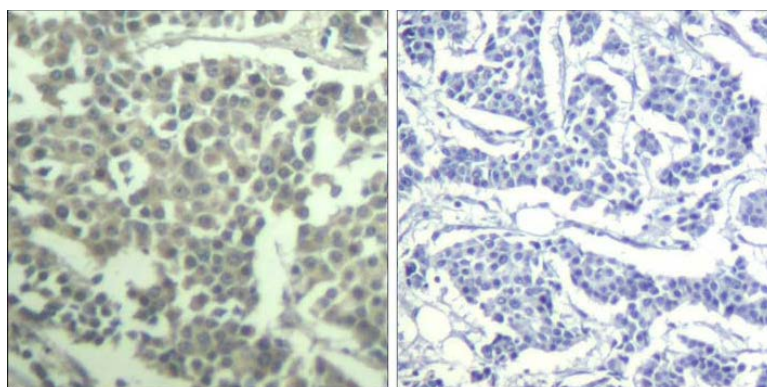




C-kit (phospho-Tyr936) Antibody

E011539

- Catalog Number:** E011539-1, E011539-2
- Amount:** 50µg/50µl, 100µg/100µl
- Form of Antibody:** Rabbit IgG in phosphate buffered saline (without Mg²⁺ and Ca²⁺), pH 7.4, 150mM NaCl, 0.02% sodium azide and 50% glycerol.
- Storage/Stability:** Store at -20 °C/year.
- Immunogen:** The antiserum was produced against synthesized phosphopeptide derived from human c-kit around the phosphorylation site of tyrosine 936 (H-I-Y^P-S-N).
- Purification:** The antibody was affinity-purified from rabbit antiserum by affinity-chromatography using epitope-specific phosphopeptide. The antibody against non-phosphopeptide was removed by chromatography using non-phosphopeptide corresponding to the phosphorylation site.
- Specificity/Sensitivity:** c-kit (phospho-Tyr936) Antibody detects endogenous levels of c-kit only when phosphorylated at tyrosine 936.
- Reactivity:** Human
- Applications:** IHC: 1:50~100
- Swiss-Prot No. :** P10721
- References:** Martin, F.H. et al. (1990) *Cell* 63, 203-11.
Blume-Jensen, P. et al. (2000) *Nat Genet* 24, 157-62.
Gommerman, J.L. et al. (1997) *J Biol Chem* 272, 30519-25.
Nocka, K. et al. (1990) *EMBO J* 9, 1805-13.



P-peptide -

+

Immunohistochemical analysis of paraffin-embedded human breast carcinoma tissue using c-kit (phospho-Tyr936) Antibody (E011539).

For Research Use Only