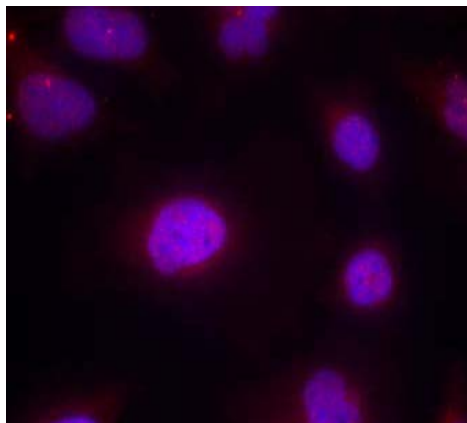




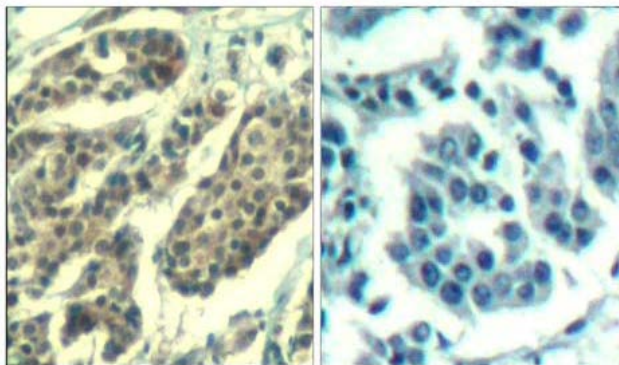
Cyclin B1 (phospho-Ser147) Antibody

E011540

- Catalog Number:** E011540-1, E011540-2
- Amount:** 50µg/50µl, 100µg/100µl
- Form of Antibody:** Rabbit IgG in phosphate buffered saline (without Mg^{2+} and Ca^{2+}), pH 7.4, 150mM NaCl, 0.02% sodium azide and 50% glycerol.
- Storage/Stability:** Store at -20°C/1 year
- Immunogen:** The antiserum was produced against synthesized phosphopeptide derived from human Cyclin B1 around the phosphorylation site of Serine 147 (A-F-S^P-D-V).
- Purification:** The antibody was affinity-purified from rabbit antiserum by affinity-chromatography using epitope-specific phosphopeptide. The antibody against non-phosphopeptide was removed by chromatography using non-phosphopeptide corresponding to the phosphorylation site.
- Specificity/Sensitivity:** Cyclin B1 (phospho-Thr147) Antibody detects endogenous levels of Cyclin B1 only when phosphorylated at Serine 147.
- Reactivity:** Human
- Applications:** IHC: 1:50~100 IF: 1:100~1:200
- Swiss-Prot No. :** P14635
- References:** Norbury, C. and Nurse, P. (1992) *Annu. Rev. Biochem.* 61, 441-470.
Atherton-Fessler, S. et al. (1993) *Mol. Cell. Biol.* 13, 1675-1685.
Galaktionov, K. et al. (1995) *Genes Dev.* 9, 1046-1058.



Immunofluorescence staining of methanol-fixed HeLa cells using Cyclin B1 (phospho-Ser147) Antibody (E011540, Red).



P-Peptid -

+

Immunohistochemical analysis of paraffin-embedded human breast carcinoma tissue using Cyclin B1 (phospho-Ser147) Antibody (E011540).

For Research Use Only