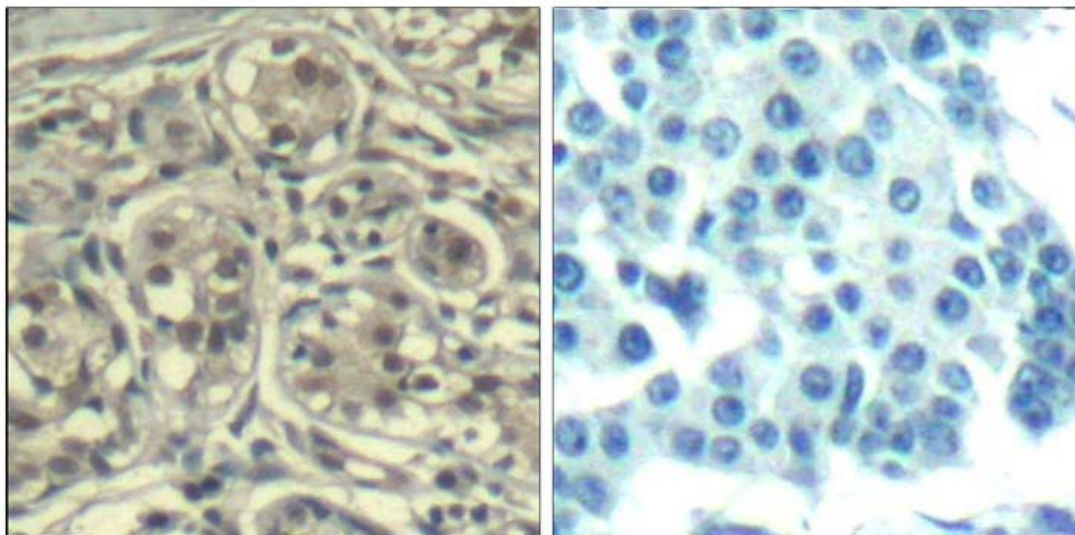




## Cyclin E1 (phospho-Thr395) Antibody

E011541

- Catalog Number:** E011541-1, E011541-2
- Amount:** 50µg/50µl, 100µg/100µl
- Form of Antibody:** Rabbit IgG in phosphate buffered saline (without  $Mg^{2+}$  and  $Ca^{2+}$ ), pH 7.4, 150mM NaCl, 0.02% sodium azide and 50% glycerol.
- Storage/Stability:** Store at -20°C/1 year
- Immunogen:** The antiserum was produced against synthesized phosphopeptide derived from human Cyclin E1 around the phosphorylation site of threonine395 (L-L-T<sup>P</sup>-P-P).
- Purification:** The antibody was affinity-purified from rabbit antiserum by affinity-chromatography using epitope-specific phosphopeptide. The antibody against non-phosphopeptide was removed by chromatography using non-phosphopeptide corresponding to the phosphorylation site.
- Specificity/Sensitivity:** Cyclin E1 (phospho-Thr395) Antibody detects endogenous levels of Cyclin E1 only when phosphorylated at threonine395.
- Reactivity:** Human
- Applications:** IHC: 1:50~100
- Swiss-Prot No. :** P24864
- References:** Lauper, N. et al. (1998) *Oncogene* 17, 2637-2643.  
Won, K.A. and Reed, S.I. (1996) *EMBO J.* 15, 4182-4193.  
Ye, X. et al. (2004) *J. Biol. Chem.* 279, 50110-50119.



P-Peptide

-

+

Immunohistochemical analysis of paraffin-embedded human breast carcinoma tissue using Cyclin E1 (phospho-Thr395) Antibody (E011541).

**For Research Use Only**