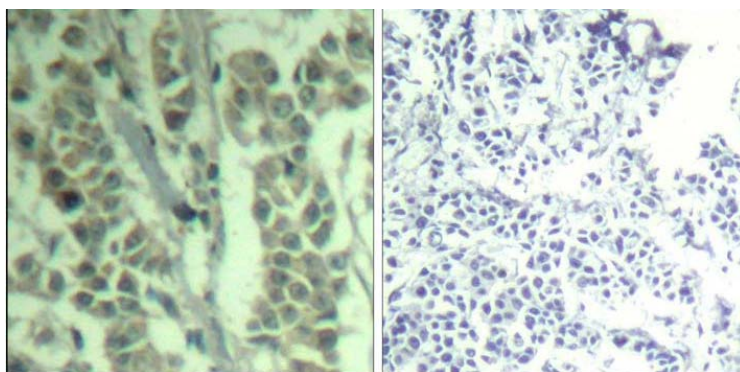




c-Cbl (phospho-Tyr700) Antibody

E011549

- Catalog Number:** E011549-1, E011549-2
- Amount:** 50µg/50µl, 100µg/100µl
- Form of Antibody:** Rabbit IgG in phosphate buffered saline (without Mg²⁺ and Ca²⁺), pH 7.4, 150mM NaCl, 0.02% sodium azide and 50% glycerol.
- Storage/Stability:** Store at -20 °C/year
- Immunogen:** The antiserum was produced against synthesized phosphopeptide derived from human c-Cbl around the phosphorylation site of tyrosine 770 (T-E-Y^P-M-T).
- Purification:** The antibody was affinity-purified from rabbit antiserum by affinity-chromatography using epitope-specific phosphopeptide. The antibody against non-phosphopeptide was removed by chromatography using non-phosphopeptide corresponding to the phosphorylation site.
- Specificity/Sensitivity:** c-Cbl (phospho-Tyr700) Antibody detects endogenous levels of c-Cbl only when phosphorylated at tyrosine 770.
- Reactivity:** Human
- Applications:** IHC: 1:50~100
- Swiss-Prot No. :** P22681
- References:** Blake, T.J. et al. (1991) *Oncogene* 6, 653-657.
Thien, C.B. and Langdon, W.Y. (1998) *Immunol. Cell Biol.* 76, 473-482.
Kamei, T. et al. (2000) *Int. J. Oncol.* 17, 335-339.
Hunter, C. et al. (1999) *J. Biol. Chem.* 274, 2097-2106.



P-peptide -

+

Immunohistochemical analysis of paraffin-embedded human breast carcinoma tissue using c-Cbl (phospho-Tyr700) Antibody (E011549).

For Research Use Only