



Abl1 (Phospho-Tyr412) Antibody

E012002

Catalog Number: E012002-1, E012002-2

Amount: 50µg/50µl, 100µg/100µl

Form of Antibody: Rabbit IgG in phosphate buffered saline (without Mg^{2+} and Ca^{2+}), pH 7.4, 150mM NaCl, 0.02% sodium azide and 50% glycerol.

Storage/Stability: Store at -20°C/1 year

Immunogen: The antiserum was produced against synthesized phosphopeptide derived from human Abl1 around the phosphorylation site of tyrosine 412 (D-T-Y^P-T-A).

Purification: The antibody was affinity-purified from rabbit antiserum by affinity-chromatography using epitope-specific phosphopeptide. The antibody against non-phosphopeptide was removed by chromatography using non-phosphopeptide corresponding to the phosphorylation site.

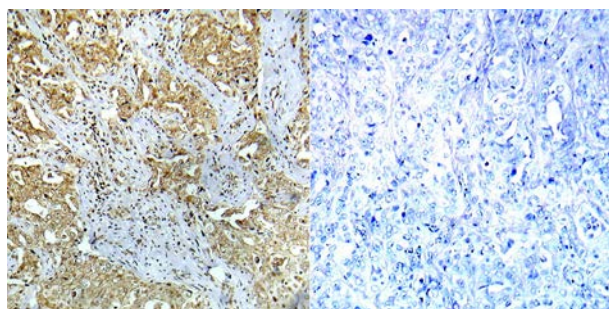
Specificity/Sensitivity: Abl1 (phospho-Tyr412) antibody detects endogenous levels of Abl1 only when phosphorylated at tyrosine 412.

Reactivity: Human, Mouse, Rat

Applications: WB: 1:500~1:1000 IHC: 1:50~1:100 ELISA: 1:4000

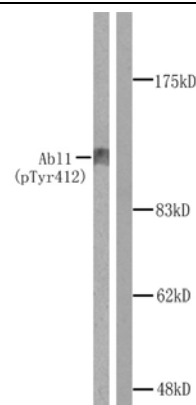
Swiss-Prot No. : P00519

References: Wang J.Y. et al. (2000) Oncogene 19, 5643-5650.
 Danial N.N. et al. (2000) Oncogene 19, 2523-2531.
 Pluk H. et al. (2002) Cell 108, 247-259.
 Rikova K, et al. (2007) Cell 131, 1190-203.
 Goss VL, et al. (2006) Blood 107, 4888-97.



P-Peptide - +

Immunohistochemical analysis of paraffin-embedded human breast carcinoma tissue using Abl1 (phospho-Tyr412) antibody (E012002).



Western blot analysis of extracts from COS7 cells treated with Adriamycin. Left: Using Abl1 (phospho-Tyr412) antibody (E012002). Right: Using the same antibody preincubated with synthesized peptide.

For Research Use Only