



## AMPKbeta1 (Phospho-Ser182) Antibody

E012004

**Catalog Number:** E012004-1, E012004-2

**Amount:** 50µg/50µl, 100µg/100µl

**Form of Antibody:** Rabbit IgG in phosphate buffered saline (without  $Mg^{2+}$  and  $Ca^{2+}$ ), pH 7.4, 150mM NaCl, 0.02% sodium azide and 50% glycerol.

**Storage/Stability:** Store at -20°C/1 year

**Immunogen:** The antiserum was produced against synthesized phosphopeptide derived from human AMPKbeta1 around the phosphorylation site of serine 182 (S-S<sup>P</sup>-P-P).

**Purification:** The antibody was affinity-purified from rabbit antiserum by affinity-chromatography using epitope-specific phosphopeptide. The antibody against non-phosphopeptide was removed by chromatography using non-phosphopeptide corresponding to the phosphorylation site.

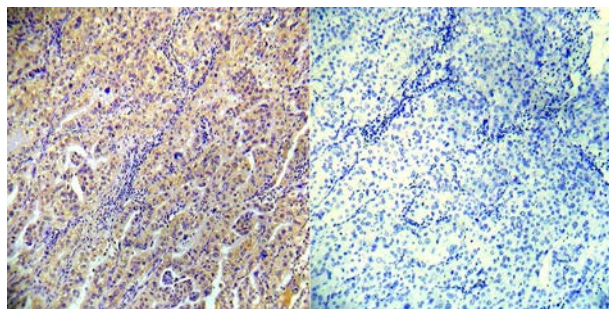
**Specificity/Sensitivity:** AMPKbeta1 (phospho-Ser182) antibody detects endogenous levels of AMPKbeta1 only when phosphorylated at serine 182.

**Reactivity:** Human, Mouse, Rat

**Applications:** WB: 1:500~1:1000 IHC: 1:50~1:100 ELISA: 1:4000

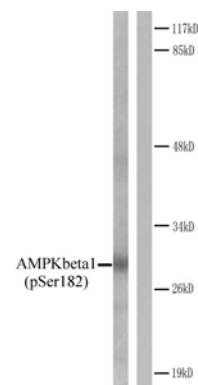
**Swiss-Prot No. :** Q9Y478

**References:** Warden, S.M. et al. (2001) Biochem. J. 354, 275-283.  
Yin W, Mu J, Birnbaum MJ (2003) J Biol Chem 278, 43074-80  
Hardie, D.G. (2004) J. Cell Sci. 117, 5479-5487.  
Shaw, R. et al. (2004) Proc. Natl. Acad. Sci. USA 101, 3329-3335.  
Watt MJ, et al. (2006) Am J Physiol Endocrinol Metab 290, E500-8



P-Peptide                      -                      +

Immunohistochemical analysis of paraffin-embedded human lung carcinoma tissue using AMPKbeta1 (phospho-Ser182) (E012004).



Western blot analysis of extracts from Jurkat cells. Left: Using AMPKbeta1 (phospho-Ser182) antibody (E012004). Right: Using the same antibody preincubated with synthesized peptide.

**For Research Use Only**