



ERK1/2 (Phospho-Thr202/Tyr204) Antibody

E012017

Catalog Number: E012017-1, E012017-2

Amount: 50µg/50µl, 100µg/100µl

Form of Antibody: Rabbit IgG in phosphate buffered saline (without Mg^{2+} and Ca^{2+}), pH 7.4, 150mM NaCl, 0.02% sodium azide and 50% glycerol.

Storage/Stability: Store at -20°C/1 year

Immunogen: The antiserum was produced against synthesized phosphopeptide derived from human ERK1/2 around the phosphorylation site of Thr202/Tyr204 (F-L-T^P-E-Y^P-V-A).

Purification: The antibody was affinity-purified from rabbit antiserum by affinity-chromatography using epitope-specific phosphopeptide. The antibody against non-phosphopeptide was removed by chromatography using non-phosphopeptide corresponding to the phosphorylation site.

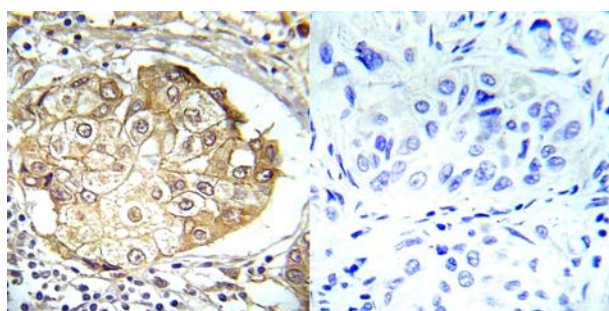
Specificity/Sensitivity: ERK1/2 (phospho-Thr202/Tyr204) antibody detects endogenous levels of ERK1/2 only when phosphorylated at Thr202/Tyr204.

Reactivity: Human, Mouse, Rat

Applications: WB: 1:500~1:1000 IHC: 1:50~1:100 ELISA: 1:4000

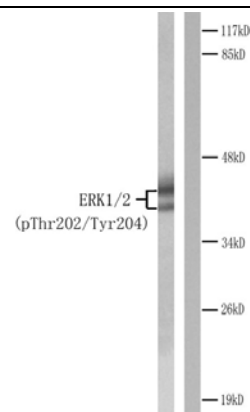
Swiss-Prot No. : P27361

References: Marais, R. et al. (1993) Cell 73, 381-93.
 Dalby, K.N. et al. (1998) J Biol Chem 273, 1496-505.
 Owens, D.M. and Keyse, S.M. (2007) Oncogene 26, 3203-13.
 Roberts, P.J. and Der, C.J. (2007) Oncogene 26, 3291-310.
 Pagès G (2007) J Cell Physiol 213, 454-63
 Basbous J, et al. (2007) Mol Cell Biol 27, 3936-50



P-Peptide - +

Immunohistochemical analysis of paraffin-embedded human breast carcinoma tissue using ERK1/2 (phospho-Thr202/Tyr204) (E012017).



Western blot analysis of extracts from Jurkat cells treated with PMA. Left: Using ERK1/2 (phospho-Thr202/Tyr204) antibody (E012017). Right: Using the same antibody preincubated with synthesized peptide.

For Research Use Only