



FOXO3A (Phospho-Ser253) Antibody

E012020

Catalog Number: E012020-1, E012020-2

Amount: 50µg/50µl, 100µg/100µl

Form of Antibody: Rabbit IgG in phosphate buffered saline (without Mg^{2+} and Ca^{2+}), pH 7.4, 150mM NaCl, 0.02% sodium azide and 50% glycerol.

Storage/Stability: Store at -20°C/1 year

Immunogen: The antiserum was produced against synthesized phosphopeptide derived from human FOXO3A around the phosphorylation site of serine 253 (A-V-S^P-M-D).

Purification: The antibody was affinity-purified from rabbit antiserum by affinity-chromatography using epitope-specific phosphopeptide. The antibody against non-phosphopeptide was removed by chromatography using non-phosphopeptide corresponding to the phosphorylation site.

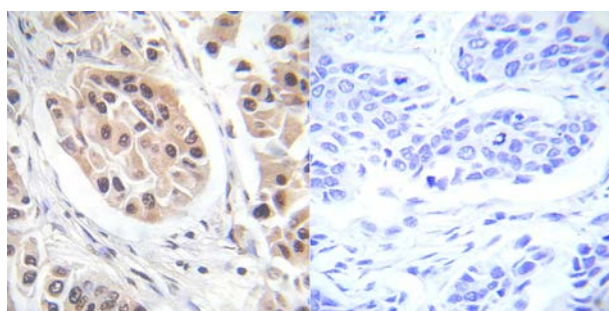
Specificity/Sensitivity: FOXO3A (phospho-Ser253) antibody detects endogenous levels of FOXO3A only when phosphorylated at serine 253.

Reactivity: Human, Mouse, Rat

Applications: WB: 1:500~1:1000 IHC: 1:50~1:100 ELISA: 1:4000

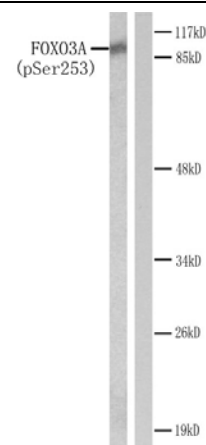
Swiss-Prot No. : O43524

References: Li M, Chiu JF, Mossman BT, Fukagawa NK (2006) D J Biol Chem 281, 40429-39
 Essafi A, et al. (2005) Oncogene 24, 2317-29
 Seoane, J. et al. (2004) Cell 117, 211-223.
 Brunet A, et al. (2001) Mol Cell Biol 21, 952-65
 Brunet A, et al. (1999) Cell 96, 857-68



P-Peptide - +

Immunohistochemical analysis of paraffin-embedded human breast carcinoma tissue using FOXO3A (phospho-Ser253) antibody (E012020).



Western blot analysis of extracts from NIH/3T3 cells treated with using Serum. Left: Using FOXO3A (phospho-Ser253) antibody (E012020). Right: Using the same antibody preincubated with synthesized peptide.

For Research Use Only