



Histone H3.1 (Phospho-Thr3) Antibody

E012022

Catalog Number: E012022-1, E012022-2

Amount: 50µg/50µl, 100µg/100µl

Form of Antibody: Rabbit IgG in phosphate buffered saline (without Mg^{2+} and Ca^{2+}), pH 7.4, 150mM NaCl, 0.02% sodium azide and 50% glycerol.

Storage/Stability: Store at -20°C/1 year

Immunogen: The antiserum was produced against synthesized phosphopeptide derived from human Histone H3.1 around the phosphorylation site of Threonine 3 (A-R-T^P-K-Q).

Purification: The antibody was affinity-purified from rabbit antiserum by affinity-chromatography using epitope-specific phosphopeptide. The antibody against non-phosphopeptide was removed by chromatography using non-phosphopeptide corresponding to the phosphorylation site.

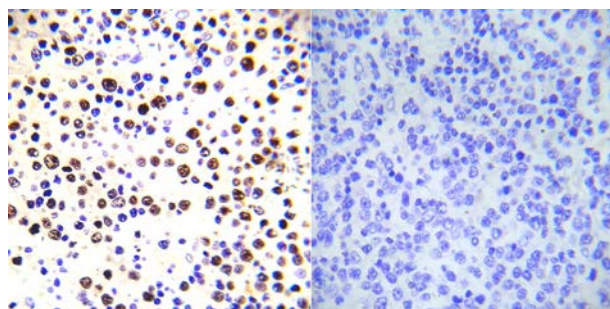
Specificity/Sensitivity: Histone H3.1 (phospho-Thr3) antibody detects endogenous levels of Histone H3.1 only when phosphorylated at Threonine 3.

Reactivity: Human, Mouse, Rat

Applications: WB: 1:500~1:1000 IHC: 1:50~1:100 ELISA: 1:4000

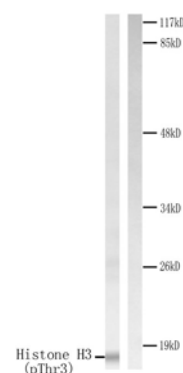
Swiss-Prot No. : P68431

References: Bonenfant D, et al. (2007) Mol Cell Proteomics 6, 1917-32
 Dai J, Sultan S, Taylor SS, Higgins JM (2005) Genes Dev 19, 472-88
 Strahl, B.D. and Allis, C.D. (2000) Nature 403, 41-45.
 Cheung, P. et al. (2000) Cell 103, 263-271.
 Hendzel, M.J. et al. (1997) Chromosoma 106, 348-360.



P-Peptide - +

Immunohistochemical analysis of paraffin-embedded human malignant lymphoma tissue using Histone H3.1 (phospho-Thr3) antibody (E012022).



Western blot analysis of extracts from HuvEc cells treated with Serum. Left: Using Histone H3.1 (phospho-Thr3) antibody (E012022). Right: Using the same antibody preincubated with synthesized peptide.

For Research Use Only