



Histone H3.1 (Phospho-Ser28) Antibody

E012023

Catalog Number: E012023-1, E012023-2

Amount: 50µg/50µl, 100µg/100µl

Form of Antibody: Rabbit IgG in phosphate buffered saline (without Mg^{2+} and Ca^{2+}), pH 7.4, 150mM NaCl, 0.02% sodium azide and 50% glycerol.

Storage/Stability: Store at -20°C/1 year

Immunogen: The antiserum was produced against synthesized phosphopeptide derived from human Histone H3.1 around the phosphorylation site of serine 28(R-K-S^P-A-P).

Purification: The antibody was affinity-purified from rabbit antiserum by affinity-chromatography using epitope-specific phosphopeptide. The antibody against non-phosphopeptide was removed by chromatography using non-phosphopeptide corresponding to the phosphorylation site.

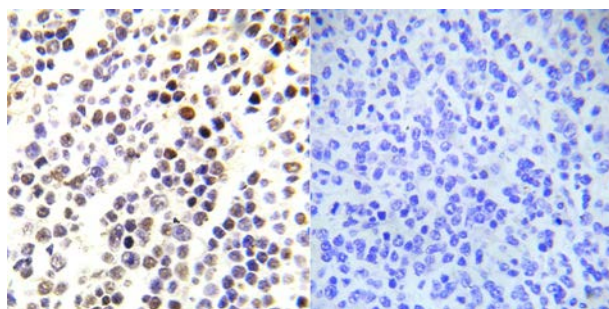
Specificity/Sensitivity: Histone H3.1 (phospho-Ser28) antibody detects endogenous levels of Histone H3.1 only when phosphorylated at serine 28.

Reactivity: Human, Mouse, Rat

Applications: WB: 1:500~1:1000 IHC: 1:50~1:100 ELISA: 1:4000

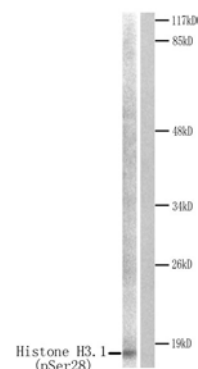
Swiss-Prot No. : P68431

References: Bonenfant D, et al. (2007) Mol Cell Proteomics 6, 1917-32
Dai J, Sultan S, Taylor SS, Higgins JM (2005) Genes Dev 19, 472-88
Strahl, B.D. and Allis, C.D. (2000) Nature 403, 41-45.
Cheung, P. et al. (2000) Cell 103, 263-271.
Hendzel, M.J. et al. (1997) Chromosoma 106, 348-360.



P-Peptide - +

Immunohistochemical analysis of paraffin-embedded human malignant lymphoma tissue using Histone H3.1 (phospho-Ser28) antibody (E012023).



Western blot analysis of extracts from HuvEc cells treated with Serum. Left: Using Histone H3.1 (phospho-Ser28) antibody (E012023). Right: Using the same antibody preincubated with synthesized peptide.

For Research Use Only