



LKB1 (Phospho-Ser334) Antibody

E012045

Catalog Number: E012045-1, E012045-2

Amount: 50µg/50µl, 100µg/100µl

Form of Antibody: Rabbit IgG in phosphate buffered saline (without Mg^{2+} and Ca^{2+}), pH 7.4, 150mM NaCl, 0.02% sodium azide and 50% glycerol.

Storage/Stability: Store at -20°C/1 year

Immunogen: The antiserum was produced against synthesized phosphopeptide derived from human LKB1 around the phosphorylation site of serine 334 (W-R-S^P-M-T).

Purification: The antibody was affinity-purified from rabbit antiserum by affinity-chromatography using epitope-specific phosphopeptide. The antibody against non-phosphopeptide was removed by chromatography using non-phosphopeptide corresponding to the phosphorylation site.

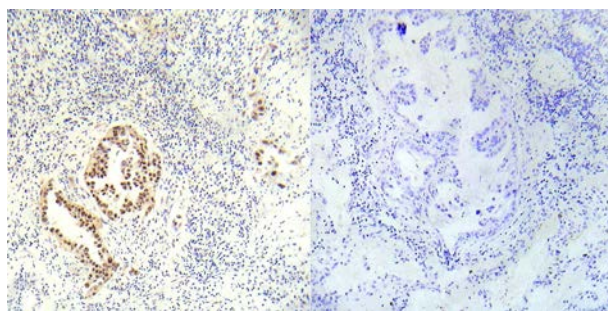
Specificity/Sensitivity: LKB1 (phospho-Ser334) antibody detects endogenous levels of LKB1 only when phosphorylated at serine 334.

Reactivity: Human, Mouse

Applications: WB: 1:500~1:1000 IHC: 1:50~1:100 ELISA: 1:4000

Swiss-Prot No. : Q15831

References: Shaw, R.J. et al. (2004) Proc. Natl. Acad. Sci. USA 101, 3329-3335.
Woods, A. et al. (2003) Curr. Biol. 13, 2004-2008.
Karuman P, et al. (2001) Mol Cell 7, 1307-19
Nezu, J. et al. (1999) Biochem. Biophys. Res. Commun. 261, 750-755
Hemminki, A. et al. (1998) Nature 391, 184-187



P-Peptide

-

+

Immunohistochemical analysis of paraffin-embedded human lung carcinoma tissue using LKB1 (phospho-Ser334) antibody (E012045).

For Research Use Only