



ASK1 (Phospho-Ser83) Antibody

E012058

Catalog Number: E012058-1, E012058-2

Amount: 50µg/50µl, 100µg/100µl

Form of Antibody: Rabbit IgG in phosphate buffered saline (without Mg^{2+} and Ca^{2+}), pH 7.4, 150mM NaCl, 0.02% sodium azide and 50% glycerol.

Storage/Stability: Store at -20°C/1 year

Immunogen: The antiserum was produced against synthesized phosphopeptide derived from human ASK1 around the phosphorylation site of serine 83 (G-S-S^P-V-G).

Purification: The antibody was affinity-purified from rabbit antiserum by affinity-chromatography using epitope-specific phosphopeptide. The antibody against non-phosphopeptide was removed by chromatography using non-phosphopeptide corresponding to the phosphorylation site.

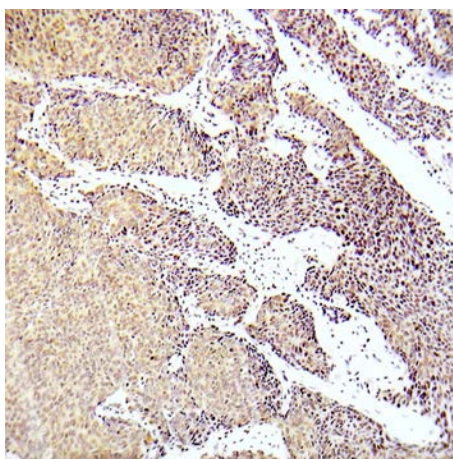
Specificity/Sensitivity: ASK1 (phospho-Ser83) antibody detects endogenous levels of ASK1 only when phosphorylated at serine 83.

Reactivity: Human

Applications: WB: 1:500~1:1000 IHC: 1:50~1:100 ELISA: 1:4000

Swiss-Prot No. : Q99683

References: Mochizuki T, et al. (2006) Oncogene 25, 3699-707.
Song JJ, Lee YJ (2005) J Biol Chem 280, 26845-55.
Ichijo, H. et al. (1997) Science 275, 90-94.
Wang, X.S. et al. (1996) J. Biol. Chem. 271, 31607-31611.
Matsuzawa, A. and Ichijo, H. (2001) J. Biochem. (Tokyo) 130, 1-8.



Immunohistochemical analysis of paraffin-embedded human lung adenocarcinoma tissue using ASK1 (Phospho-Ser83) Antibody (E012058).

For Research Use Only