



## CHK1 (Phospho-Ser317) Antibody

E012066

**Catalog Number:** E012066-1, E012066-2

**Amount:** 50µg/50µl, 100µg/100µl

**Form of Antibody:** Rabbit IgG in phosphate buffered saline (without  $Mg^{2+}$  and  $Ca^{2+}$ ), pH 7.4, 150mM NaCl, 0.02% sodium azide and 50% glycerol.

**Storage/Stability:** Store at -20°C/1 year

**Immunogen:** The antiserum was produced against synthesized phosphopeptide derived from human CHK1 around the phosphorylation site of serine 317 (S-S<sup>P</sup>-Q-P).

**Purification:** The antibody was affinity-purified from rabbit antiserum by affinity-chromatography using epitope-specific phosphopeptide. The antibody against non-phosphopeptide was removed by chromatography using non-phosphopeptide corresponding to the phosphorylation site.

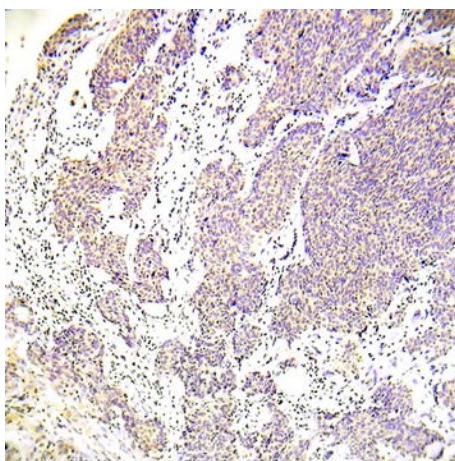
**Specificity/Sensitivity:** CHK1 (Phospho-Ser317) antibody detects endogenous levels of CHK1 only when phosphorylated at serine 317.

**Reactivity:** Human, Rat

**Applications:** WB: 1:500~1:1000      IHC: 1:50~1:100      ELISA: 1:4000

**Swiss-Prot No. :** O14757

**References:** Dephore N, et al. (2008) Proc Natl Acad Sci U S A 105, 10762-7.  
Cruet-Hennequart S, et al. (2008) DNA Repair (Amst) 7, 582-96.  
Matsuoka S, et al. (2007) Science 316, 1160-6.  
Carlessi L, et al. (2007) Mol Cancer Ther 6, 935-44.  
Stiff T, et al. (2006) EMBO J 25, 5775-82.



Immunohistochemical analysis of paraffin-embedded human lung adenocarcinoma tissue using CHK1 (Phospho-Ser317) Antibody (E012066).

**For Research Use Only**