



CrkL (Phospho-Tyr207) Antibody

E012071

Catalog Number: E012071-1, E012071-2

Amount: 50µg/50µl, 100µg/100µl

Form of Antibody: Rabbit IgG in phosphate buffered saline (without Mg^{2+} and Ca^{2+}), pH 7.4, 150mM NaCl, 0.02% sodium azide and 50% glycerol.

Storage/Stability: Store at -20°C/1 year

Immunogen: The antiserum was produced against synthesized phosphopeptide derived from human CrkL around the phosphorylation site of tyrosine 207 (H-A-Y^P-A-Q).

Purification: The antibody was affinity-purified from rabbit antiserum by affinity-chromatography using epitope-specific phosphopeptide. The antibody against non-phosphopeptide was removed by chromatography using non-phosphopeptide corresponding to the phosphorylation site.

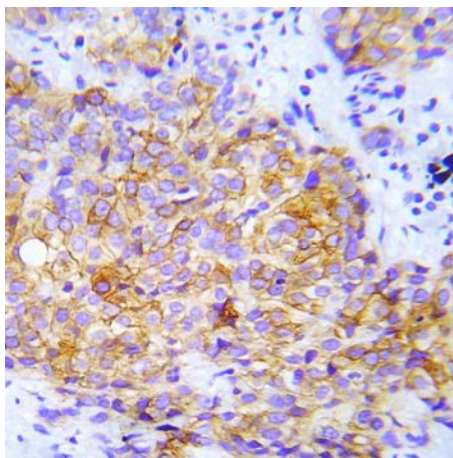
Specificity/Sensitivity: CrkL (Phospho-Tyr207) antibody detects endogenous levels of CrkL only when phosphorylated at tyrosine 207.

Reactivity: Human, Mouse, Rat

Applications: WB: 1:500~1:1000 IHC: 1:50~1:100 ELISA: 1:4000

Swiss-Prot No. : P46109

References: Rush J., et al. (2005) Nat. Biotechnol. 23:94-101.
Guo A, et al. (2008) Proc Natl Acad Sci U S A 105, 692-7.
Wolf-Yadlin A, et al. (2006) Mol Syst Biol 2, 54.
Satter, M. and Salgia, R. (1998) Leukemia 12, 637-644.
Feller, S. M. et al. (1998) J. Cell. Physiol. 177, 535-552.
Kiyokawa, E. et al. (1997) Crit. Rev. Oncog. 8, 329-342.



Immunohistochemical analysis of paraffin-embedded human lung adenocarcinoma tissue using CrkL (Phospho-Tyr207) Antibody (E012071).

For Research Use Only