



FGFR1 (Phospho-Tyr154) Antibody

E012077

Catalog Number: E012077-1, E012077-2

Amount: 50µg/50µl, 100µg/100µl

Form of Antibody: Rabbit IgG in phosphate buffered saline (without Mg^{2+} and Ca^{2+}), pH 7.4, 150mM NaCl, 0.02% sodium azide and 50% glycerol.

Storage/Stability: Store at -20°C/1 year

Immunogen: The antiserum was produced against synthesized phosphopeptide derived from human FGFR1 around the phosphorylation site of RMPVAPYWTSPEK tyrosine 154 (A-P-Y^P-W-T).

Purification: The antibody was affinity-purified from rabbit antiserum by affinity-chromatography using epitope-specific phosphopeptide. The antibody against non-phosphopeptide was removed by chromatography using non-phosphopeptide corresponding to the phosphorylation site.

Specificity/Sensitivity: FGFR1 (Phospho-Tyr154) antibody detects endogenous levels of FGFR1 only when phosphorylated at tyrosine 154.

Reactivity: Human, Mouse, Rat

Applications: WB: 1:500~1:1000 IHC: 1:50~1:100 ELISA: 1:4000

Swiss-Prot No. : P11362

References: DiGabriele A.D., et al. (1998) Nature 393:812-817.

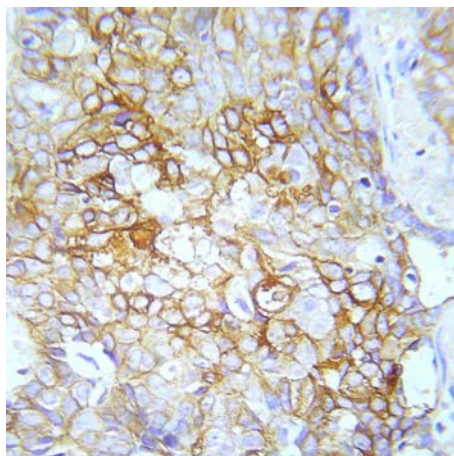
Cross M.J., et al. Mol. (2002) Biol. Cell 13:2881-2893.

Hinsby AM, Olsen JV, Bennett KL, Mann M (2003) Mol Cell Proteomics 2, 29-36.

Powers, C.J. et al. (2000) Endocr Relat Cancer 7, 165-97.

Reilly, J.F. et al. (2000) J Biol Chem 275, 7771-8.

Mohammadi, M. et al. (1996) Mol Cell Biol 16, 977-89.



Immunohistochemical analysis of paraffin-embedded human lung adenocarcinoma tissue using FGFR1 (Phospho-Tyr154) Antibody (E012077).

For Research Use Only