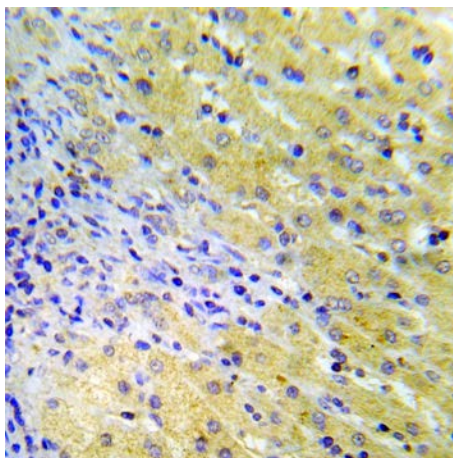




## Gab1 (Phospho-Tyr659) Antibody

E012082

- Catalog Number:** E012082-1, E012082-2
- Amount:** 50µg/50µl, 100µg/100µl
- Form of Antibody:** Rabbit IgG in phosphate buffered saline (without  $Mg^{2+}$  and  $Ca^{2+}$ ), pH 7.4, 150mM NaCl, 0.02% sodium azide and 50% glycerol.
- Storage/Stability:** Store at -20°C/1 year
- Immunogen:** The antiserum was produced against synthesized phosphopeptide derived from human Gab1 around the phosphorylation site of tyrosine 659 (V-D-Y<sup>P</sup>-V-V).
- Purification:** The antibody was affinity-purified from rabbit antiserum by affinity-chromatography using epitope-specific phosphopeptide. The antibody against non-phosphopeptide was removed by chromatography using non-phosphopeptide corresponding to the phosphorylation site.
- Specificity/Sensitivity:** Gab1 (Phospho-Tyr659) antibody detects endogenous levels of Gab1 only when phosphorylated at tyrosine 659.
- Reactivity:** Human, Mouse, Rat
- Applications:** WB: 1:500~1:1000      IHC: 1:50~1:100      ELISA: 1:4000
- Swiss-Prot No. :** Q13480
- References:** Hoffmann KM, Tapia JA, Jensen RT (2006) Cell Signal 18, 942-54.  
Montagner A, et al. (2005) J Biol Chem 280, 5350-60.  
Cunnick JM, Mei L, Doupnik CA, Wu J (2001) J Biol Chem 276, 24380-7.  
Holgado-Madruga, M. et al. (1996) Nature 379, 560-564.  
Weidner, K.M. et al. (1996) Nature 384, 173-176.  
Takahashi-Tezuka, M. et al. (1998) Mol. Cell. Biol. 18, 4109-4117.



Immunohistochemical analysis of paraffin-embedded human hepatocellular carcinoma tissue using Gab1 (Phospho-Tyr659) Antibody (E012082).

**For Research Use Only**