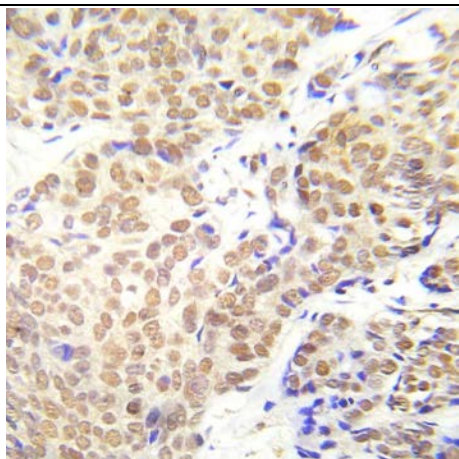




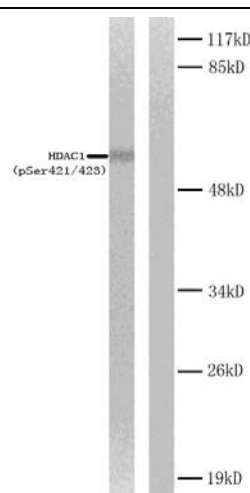
HDAC1 (Phospho-Ser421/423) Antibody

E012085

- Catalog Number:** E012085-1, E012085-2
- Amount:** 50µg/50µl, 100µg/100µl
- Form of Antibody:** Rabbit IgG in phosphate buffered saline (without Mg^{2+} and Ca^{2+}), pH 7.4, 150mM NaCl, 0.02% sodium azide and 50% glycerol.
- Storage/Stability:** Store at -20°C/1 year
- Immunogen:** The antiserum was produced against synthesized phosphopeptide derived from human HDAC1 around the phosphorylation site of serine 421/423 (E-F-S^P-D-S^P-E-E).
- Purification:** The antibody was affinity-purified from rabbit antiserum by affinity-chromatography using epitope-specific phosphopeptide. The antibody against non-phosphopeptide was removed by chromatography using non-phosphopeptide corresponding to the phosphorylation site.
- Specificity/Sensitivity:** HDAC1 (Phospho-Ser421/423) antibody detects endogenous levels of HDAC1 only when phosphorylated at serine 421/423.
- Reactivity:** Human, Mouse, Rat
- Applications:** WB: 1:500~1:1000 IHC: 1:50~1:100 ELISA: 1:4000
- Swiss-Prot No. :** Q13547
- References:** Dephore N, et al. (2008) Proc Natl Acad Sci U S A 105, 10762-7.
 Han G, et al. (2008) Proteomics 8, 1346-61.
 Molina H, et al. (2007) Proc Natl Acad Sci U S A 104, 2199-204.
 Olsen JV, et al. (2006) Cell 127, 635-48.
 Pflum MK, Tong JK, et al. (2001) J Biol Chem 276, 47733-41.
 Marmorstein, R. et al. (2001) Cell. Mol. Life Sci. 58, 693-703.



Immunohistochemical analysis of paraffin-embedded human breast carcinoma tissue using HDAC1 (Phospho-Ser421/423) antibody (E012085).



Western blot analysis of extracts from HELA cells. Left: Using HDAC1 (Phospho-Ser421/423) antibody (E012085). Right: Using the same antibody preincubated with synthesized peptide.

For Research Use Only