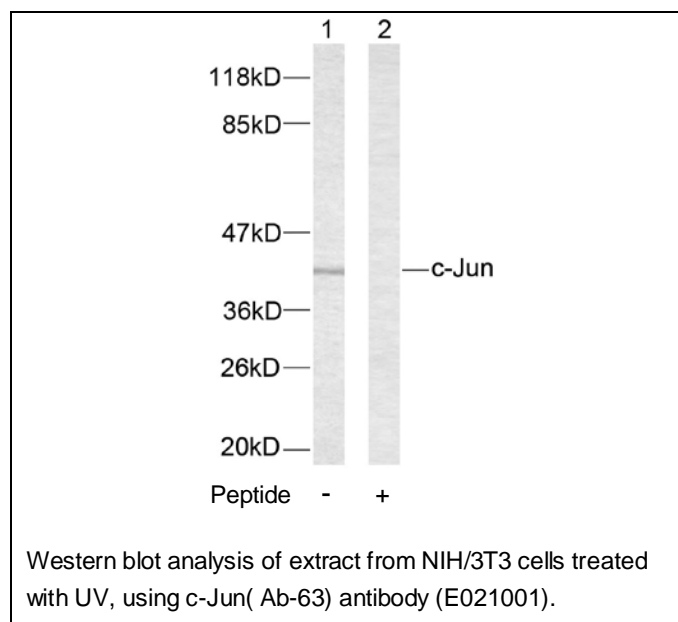




c-Jun (Ab-63) Antibody

E021001

- Catalog Number:** E021001-1, E021001-2
- Amount:** 50µg/50µl, 100µg/100µl
- Form of Antibody:** Rabbit IgG in phosphate buffered saline (without Mg^{2+} and Ca^{2+}), pH 7.4, 150mM NaCl, 0.02% sodium azide and 50% glycerol.
- Storage/Stability:** Store at -20°C/1 year
- Immunogen:** The antiserum was produced against synthesized non-phosphopeptide derived from human c-Jun around the phosphorylation site of serine 63 (L-T-S^P-P-D).
- Purification:** The antibody was affinity-purified from rabbit antiserum by affinity-chromatography using epitope-specific immunogen.
- Specificity/Sensitivity:** c-Jun (Ab-63) antibody detects endogenous levels of c-Jun protein around serine 63.
- Reactivity:** Human, Mouse, Rat
- Applications:** WB: 1:500~1:1000
- Swiss-Prot No. :** P05412
- References:** Wei W, et al. (2005). Cancer Cell. 8(1): 25-33.
Sevilla A, et al. (2004). Oncogene.23 (55): 8950-8958.
Li L, et al. (2004). J Biol Chem.279 (6): 4058-4065.
Hurd C, et al. (2002). Oncogene.21 (14): 2154-2160.



For Research Use Only