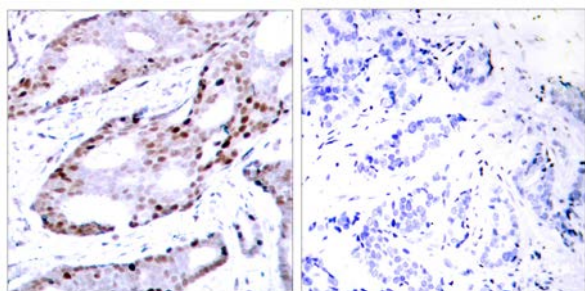




## c-Jun (Ab-73) Antibody

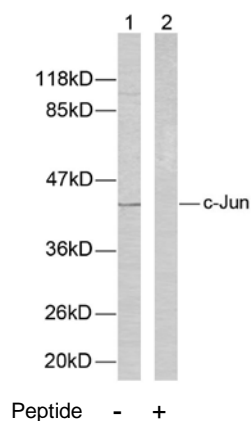
E021003

- Catalog Number:** E021003-1, E021003-2  
**Amount:** 50µg/50µl, 100µg/100µl  
**Form of Antibody:** Rabbit IgG in phosphate buffered saline (without Mg<sup>2+</sup> and Ca<sup>2+</sup>), pH 7.4, 150mM NaCl, 0.02% sodium azide and 50% glycerol.  
**Storage/Stability:** Store at -20°C/1 year  
**Immunogen:** The antiserum was produced against synthesized non-phosphopeptide derived from human c-Jun around the phosphorylation site of serine 73 (L-A-S<sup>P</sup>-P-E).  
**Purification:** The antibody was affinity-purified from rabbit antiserum by affinity-chromatography using epitope-specific immunogen.  
**Specificity/Sensitivity:** c-Jun (Ab-73) antibody detects endogenous levels of total c-Jun protein.  
**Reactivity:** Human, Mouse, Rat  
**Applications:** WB: 1:500~1:1000 IHC: 1:50~1:100  
**Swiss-Prot No. :** P05412  
**References:** Sevilla A, et al. (2004) *Oncogene*.23 (55): 8950-8958.  
Beausoleil S A, et al. (2004) *Proc Natl Acad Sci U S A*. 101(33): 12130-12135.  
Binetruy B, et al. (1991) *Nature*. 351:122-127.  
Smeal T, et al. (1991) *Nature*. 354: 494-496.  
Derijard B, et al. (1994) *Cell*. 76:1025-1037.



Peptide - +

Immunohistochemical analysis of paraffin- embedded human breast carcinoma tissue using c-Jun (Ab-73) antibody (E021003).



Western blot analysis of extracts from HeLa cells using c-Jun (Ab-73) antibody (E021003).

**For Research Use Only**