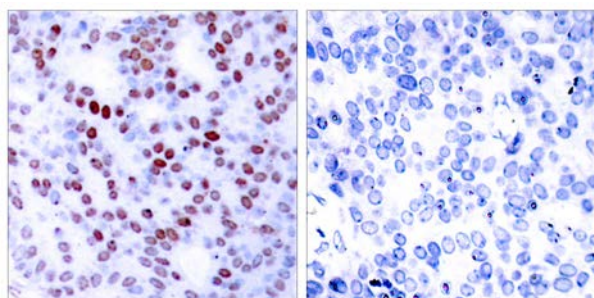




c-Jun (Ab-243) Antibody

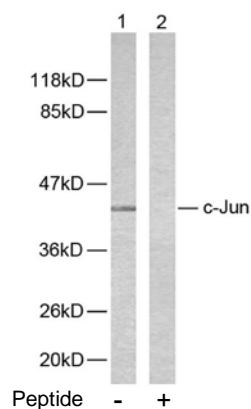
E021025

- Catalog Number:** E021025-1, E021025-2
- Amount:** 50µg/50µl, 100µg/100µl
- Form of Antibody:** Rabbit IgG in phosphate buffered saline (without Mg²⁺ and Ca²⁺), pH 7.4, 150mM NaCl, 0.02% sodium azide and 50% glycerol.
- Storage/Stability:** Store at -20°C/1 year
- Immunogen:** The antiserum was produced against synthesized non-phosphopeptide derived from human c-Jun around the phosphorylation site of serine 243 (P-L-S^P-P-I).
- Purification:** The antibody was affinity-purified from rabbit antiserum by affinity-chromatography using epitope-specific immunogen.
- Specificity/Sensitivity:** c-Jun (Ab-243) antibody detects endogenous levels of total c-Jun protein.
- Reactivity:** Human, Mouse, Rat
- Applications:** WB: 1:500~1:1000 IHC: 1:50~1:100
- Swiss-Prot No. :** P05412
- References:** Boyle W J, et al. (1991) Cell. 64(3): 573-584.
Binetruy B, et al. (1991) Nature. 351: 122-127.
Smeal T, et al. (1991) Nature. 354:494-496.
Derijard B, et al. (1994) Cell. 76:1025-1037.
Kyriakis J M, et al. (1994) Nature. 369: 156-160.



Peptide - +

Immunohistochemical analysis of paraffin-embedded human breast carcinoma tissue using c-Jun (Ab-243) antibody (E021025).



Western blot analysis of extracts from HeLa cells using c-Jun (Ab-243) antibody (E021025).