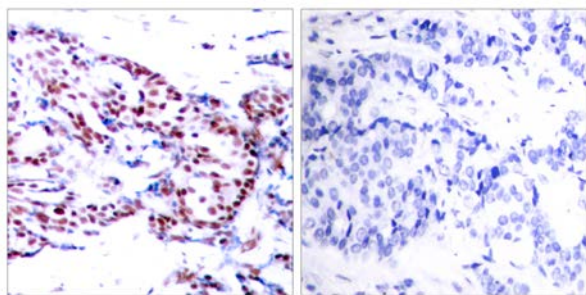




ATF-2 (Ab-71 or 53) Antibody

E021031

- Catalog Number:** E021031-1, E021031-2
- Amount:** 50µg/50µl, 100µg/100µl
- Form of Antibody:** Rabbit IgG in phosphate buffered saline (without Mg^{2+} and Ca^{2+}), pH 7.4, 150mM NaCl, 0.02% sodium azide and 50% glycerol.
- Storage/Stability:** Store at -20°C/1 year
- Immunogen:** The antiserum was produced against synthesized non-phosphopeptide derived from human ATF-2 around the phosphorylation site of threonine 71 or 53 (T-P-T^P-P-T).
- Purification:** The antibody was affinity-purified from rabbit antiserum by affinity-chromatography using epitope-specific immunogen.
- Specificity/Sensitivity:** ATF-2(Ab-71or 53) antibody detects endogenous levels of total ATF-2 protein.
- Reactivity:** Human, Mouse, Rat
- Applications:** WB: 1:500~1:1000 IHC: 1:50~1:100 IF:1:100~1:200
- Swiss-Prot No. :** P15336
- References:** Sevilla A, et al. (2004) J Biol Chem. 279(26):27458-27465.
 Waetzig G H, et al. (2002) J Immunol. 168(10): 5342-5351.
 Abdel-Hafiz H A, et al. (1992) Mol Endocrinol. 6: 2079-2089.
 Gupta S, et al. (1995) Science. 267: 389-393.
 Van Dam H, et al. (1995) EMBO J. 14(8): 1798-1811.

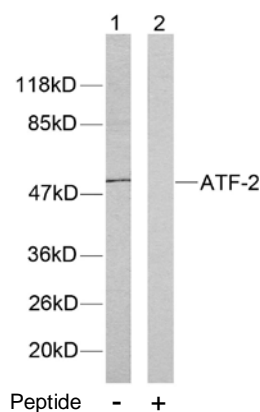


Peptide

-

+

Immunohistochemical analysis of paraffin- embedded human breast carcinoma tissue using ATF-2 (Ab-71or 53) antibody (E021031).



Western blot analysis of extracts from HeLa cells using ATF-2 (Ab-71or 53) antibody (E021031).

For Research Use Only