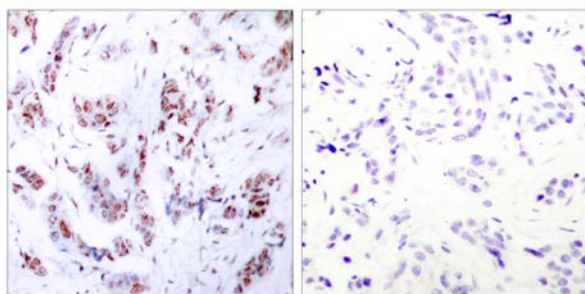




MEF2A (Ab-312) Antibody

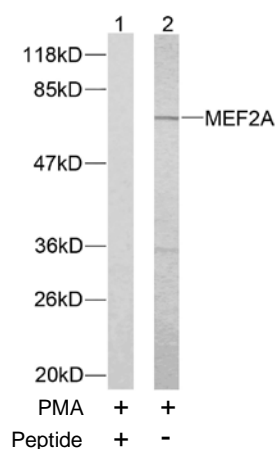
E021039

- Catalog Number:** E021039-1, E021039-2
Amount: 50µg/50µl, 100µg/100µl
Form of Antibody: Rabbit IgG in phosphate buffered saline (without Mg^{2+} and Ca^{2+}), pH 7.4, 150mM NaCl, 0.02% sodium azide and 50% glycerol.
Storage/Stability: Store at -20°C/1 year
Immunogen: The antiserum was produced against synthesized non-phosphopeptide derived from human MEF2A around the phosphorylation site of threonine 312 (L-A-T^P-P-V).
Purification: The antibody was affinity-purified from rabbit antiserum by affinity-chromatography using epitope-specific immunogen.
Specificity/Sensitivity: MEF2A (Ab-312) antibody detects endogenous levels of total MEF2A protein.
Reactivity: Human, Mouse, Rat
Applications: WB: 1:500~1:1000 IHC: 1:50~1:100
Swiss-Prot No. : Q02078
References: Kato Y, et al. (2000) J Biol Chem. 275(24): 18534-18540.
Zhao M, et al. (1999) Mol Cell Biol. 19(1): 21-30.



Peptide - +

Immunohistochemical analysis of paraffin-embedded human breast carcinoma tissue using MEF2A (Ab-312) antibody (E021039).



Western blot analysis of extracts from NIH/3T3 cells using MEF2A (Ab-312) antibody (E021039).

For Research Use Only