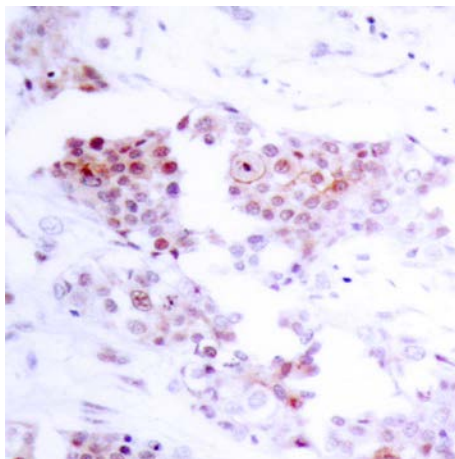




MEF2A (Ab-319) Antibody

E021040

- Catalog Number:** E021040-1, E021040-2
- Amount:** 50µg/50µl, 100µg/100µl
- Form of Antibody:** Rabbit IgG in phosphate buffered saline (without Mg^{2+} and Ca^{2+}), pH 7.4, 150mM NaCl, 0.02% sodium azide and 50% glycerol.
- Storage/Stability:** Store at -20°C/1 year
- Immunogen:** The antiserum was produced against synthesized non-phosphopeptide derived from human MEF2A around the phosphorylation site of threonine 319 (V-T-T^P-P-S).
- Purification:** The antibody was affinity-purified from rabbit antiserum by affinity-chromatography using epitope-specific immunogen.
- Specificity/Sensitivity:** MEF2A (Ab-319) antibody detects endogenous levels of total MEF2A protein.
- Reactivity:** Human, Mouse, Rat
- Applications:** IHC: 1:50~1:100
- Swiss-Prot No. :** Q02078
- References:** Kato Y, et al. (2000) J Biol Chem. 275(24): 18534-18540.
Zhao M, et al. (1999) Mol Cell Biol. 19(1): 21-30.



Immunohistochemical analysis of paraffin-embedded human breast carcinoma tissue using MEF2A (Ab-319) antibody (E021040).

For Research Use Only