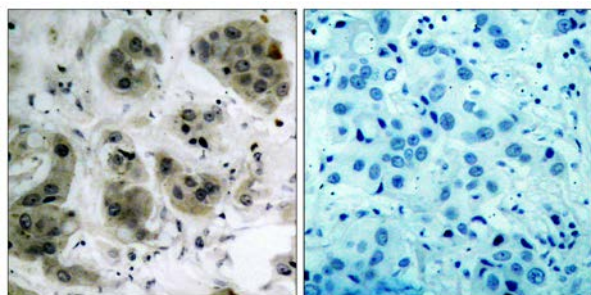




## Akt (Ab-473) Antibody

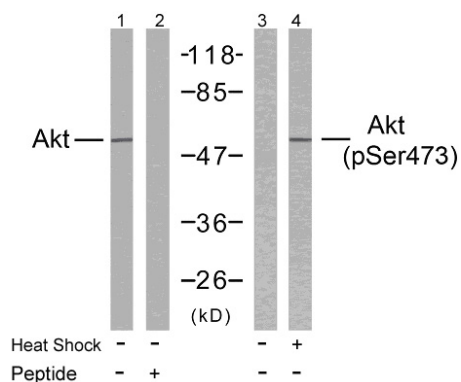
E021054

- Catalog Number:** E021054-1, E021054-2
- Amount:** 50µg/50µl, 100µg/100µl
- Form of Antibody:** Rabbit IgG in phosphate buffered saline (without  $Mg^{2+}$  and  $Ca^{2+}$ ), pH 7.4, 150mM NaCl, 0.02% sodium azide and 50% glycerol.
- Storage/Stability:** Store at -20°C/1 year
- Immunogen:** The antiserum was produced against synthesized non-phosphopeptide derived from human Akt around the phosphorylation site of serine 473 (Q-F-S<sup>P</sup>-Y-S).
- Purification:** The antibody was affinity-purified from rabbit antiserum by affinity-chromatography using epitope-specific immunogen.
- Specificity/Sensitivity:** Akt (Ab-473) antibody detects endogenous levels of total Akt protein.
- Reactivity:** Human, Mouse, Rat
- Applications:** WB: 1:100~1:500 IHC: 1:50~1:100
- Swiss-Prot No. :** P31749
- References:** Baudhuin LM, et al. (2004) FASEB J Feb; 18(2): 341-3.  
 Min YH, et al. (2004) Cancer Res; 64(15): 5225-31.  
 Feng J, et al. (2004) J Biol Chem; 279(34): 35510-7.  
 Ayala G, et al. (2004) Clin Cancer Res; 10(19): 6572-8.  
 Lungu AO, et al. (2004) J Biol Chem; 279(47): 48794-800.



Peptide - +

Immunohistochemical analysis of paraffin- embedded human breast carcinoma tissue using Akt (Ab-473) antibody (E021054).



Western blot analysis of extracts from HeLa cells using Akt (Ab-473) antibody (E021054, Lane 1 and 2) and Akt (phospho-Ser473) antibody (E011054, Lane 3 and 4).

**For Research Use Only**